



<b>Date:</b>	<b>Approved:</b>
<b>Type:</b>	
<b>Luminaire:</b>	
<b>Project:</b>	

## MINI COVELINE 2



The **MINI COVELINE 2** is a very slim profile luminaire, less than 1 inch tall, that's perfect for tight spaces that require a maximum range of light output. **MINI COVELINE 2** is available in 1 or 4 foot lengths with 27K, 3K, 35K or 4K color temperatures in 93 CRI standard. The housing is constructed of extruded aluminum with tooled end caps and is rated for dry and damp locations. It's Chicago Code Compliant meeting the standards for application use in Chicago, IL. and features Plug N' Play connectors for easy installation. Standard bracket has 135° rotation capability for adjusting beam direction. Flicker free dimmable to <1% full brightness with 0-10V dimming.



### SPECIFICATIONS

#### PHYSICAL

<b>BC</b>	<b>beam spread</b>	40°, 60°, 120°, Wall Wash
	<b>LEDs per foot</b>	14 per foot
<b>WC</b>	<b>dimensions</b>	12" x 1.28" x .95", 48" x 1.28" x .95"
	<b>weight</b>	1 foot (0.75 lbs), 4 foot (3 lbs)
	<b>housing</b>	extruded aluminum housing with tooled end caps
	<b>lens</b>	<b>standard:</b> etched polycarbonate
	<b>mounting</b>	<b>standard:</b> surface mount bracket with 135° rotation
	<b>ingress protection</b>	IP44 rated for damp and dry interior locations
	<b>luminaire connections</b>	daisy chain with male and female, 6-PIN, plug-n-play connectors

#### PERFORMANCE

<b>WC</b>	<b>lumen output (all on)</b>	1250 lm/ft max @ 90 CRI, 4000K, 10W/ft max
	<b>lumen maintenance</b>	L70 ≥ 70,000 hours
	<b>operating temperature</b>	-4°F to 104°F (-20°C to 40°C)
	<b>color consistency</b>	2 SDCM / <b>standard:</b> 93 CRI
	<b>warranty</b>	5-Year limited warranty

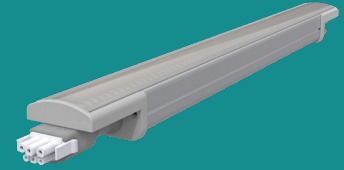
#### ELECTRICAL

<b>BC</b>	<b>input voltage</b>	Universal 120 – 277 VAC
	<b>power supply</b>	Integral Class II, electronic high-power factor 98% @ 120V
	<b>certification</b>	ETL / cETL listed
	<b>standards</b>	UL 1598, CSA Std C22.2 No. 250.0, IESLM-79/LM-80, FCC Part 15
	<b>power consumption</b>	1 ft @ full power (10W), 4 ft @ full power (40W)
	<b>dimming</b>	Integral 0-10V dimming, <1% (dim-to-off)

**WC** = World Class Features

**BC** = Best in Class Features

# MINI COVELINE 2



## Ordering Information

QuickShip max order = 25 pcs

### PART NUMBERS

MC2		UNV		LD								
MODEL	LENGTH	VOLTAGE	COLOR	POWER (*Typical)	OPTICS	DIMMING						
MC2	1	12 in. [305 mm]	UNV	120 - 177 VAC	927	93 CRI, 2700K	1ft	1 foot luminaire	40	40° beam	LD	0-10V Dimming, <1% Dim-to-Off
	4	48 in. [1219 mm]					930	93 CRI, 3000K				
					935	93 CRI, 3500K	04W	4W (500 Lumens)	120	120° beam		
					940	93 CRI, 4000K	06W	6W (800 Lumens)	WW	Wall Wash		
							08W	8W (1000 Lumens)				
							10W	10W (1250 Lumens)				
							4ft	4 foot luminaire				
							08W	8W (1000 Lumens)				
							16W	16W (2000 Lumens)				
							24W	24W (32000 Lumens)				
							32W	32W (4000 Lumens)				
							40W	40W (5000 Lumens)				

\*Typical Lumens based on 940 Color

### Cable Accessories (Indicate the quantity needed for each item.)

**REQUIRED:** Starter Cable (**SC6.0-6PIN**) and Terminator Cap (**TCAP-6PIN**) for every run. **Maximum Run Length** = 80 feet @ 120 VAC, 160 feet @ 277 VAC, 10W max

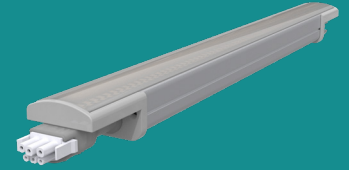
- \_\_\_\_\_ **SC6.0-6PIN** 6.0 Foot (72Inch) Starter Connection Cord, 6 Pin
- \_\_\_\_\_ **TCAP-6PIN** Termination Cap, 6 Pin
- \_\_\_\_\_ **EC0.5-6PIN** 0.5 Foot (6 Inch) Extension Cord, 6 Pin
- \_\_\_\_\_ **EC1.0-6PIN** 1.0 Foot (12 Inch) Extension Cord, 6 Pin
- \_\_\_\_\_ **EC2.0-6PIN** 2.0 Foot (24 Inch) Extension Cord, 6 Pin
- \_\_\_\_\_ **EC5.0-6PIN** 5.0 Foot (60 Inch) Extension Cord, 6 Pin

### Mounting Options (Indicate the quantity needed for each item.) Each luminaire includes Surface Mount Bracket with 135° rotation.

- \_\_\_\_\_ **SSL-TRK1** Mounting Track 12 Inch
- \_\_\_\_\_ **SSL-TRK4** Mounting Track 48 Inch
- \_\_\_\_\_ **TRK-ADAPTER** Required Track Adapter for Mounting Track (2 per 1 Foot, 4 per 4 Foot)

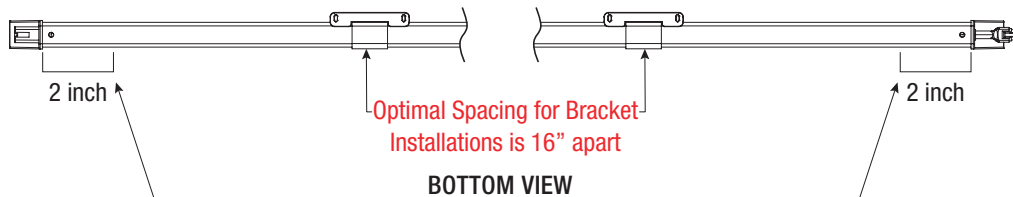
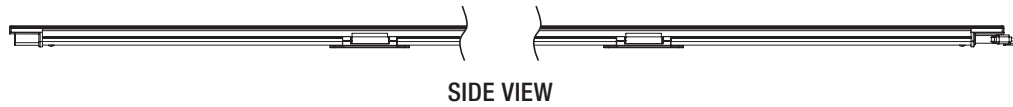
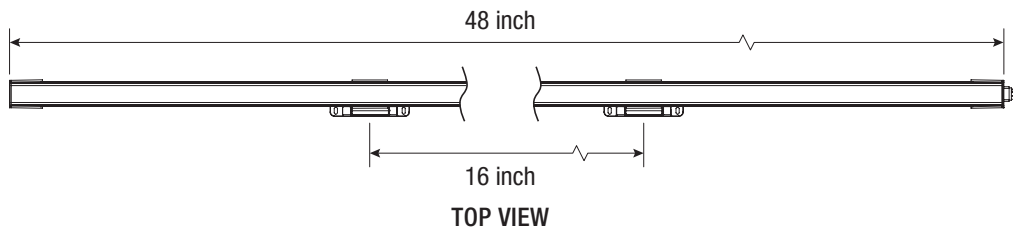
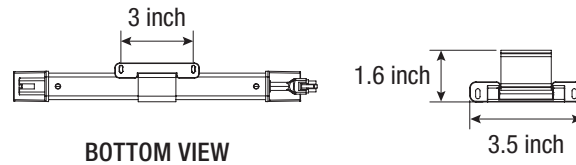
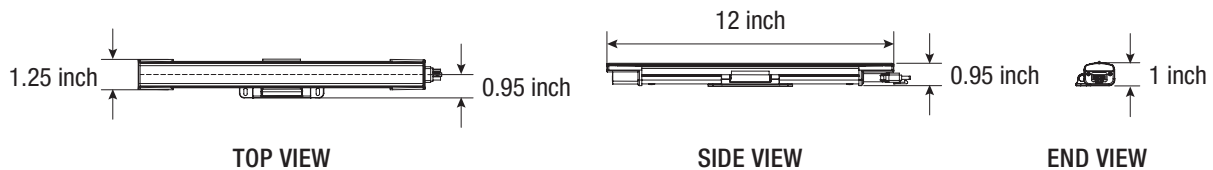
# MINI COVELINE 2

## Standard Dimensions



### DIMENSIONS WITH STANDARD BRACKET

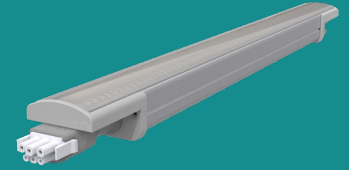
	1 ft	4 ft
<b>length</b>	12" W	48" W
<b>width</b>	1.28" W	1.28" W
<b>width w/ bracket</b>	1.66" D	1.66" D
<b>height</b>	.86" D	.86" D
<b>height w/ bracket</b>	.95" D	.95" D



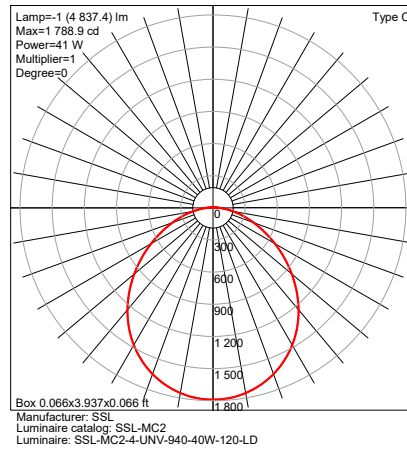
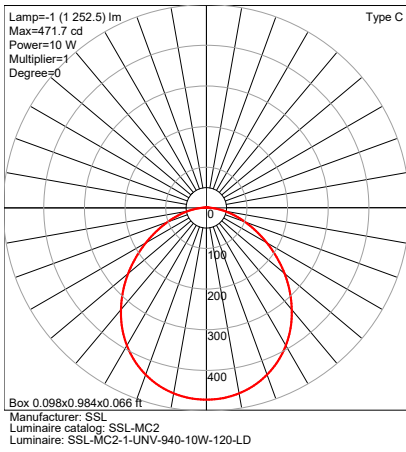
**TO PREVENT VOIDING THE WARRANTY, DO NOT INSTALL BRACKETS WITHIN 2" FROM THE LUMINAIRE ENDS**

# MINI COVELINE 2

## Photometry

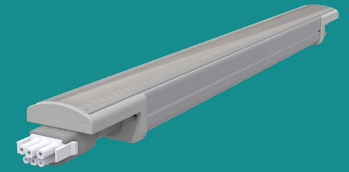


### OPTICAL DISTRIBUTION



### PERFORMANCE

Model	Connected Wattage	4000K
MC2-1	10	1250
MC2-4	40	5000

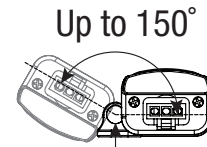
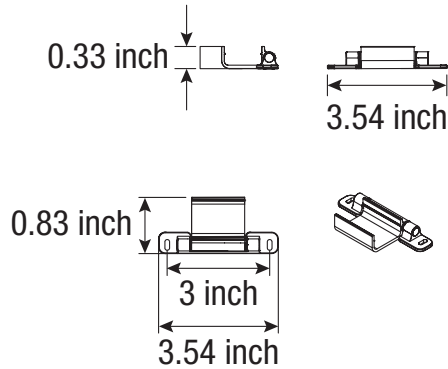


## Mounting Options

### STANDARD ADJUSTABLE BRACKET

Minimum Bracket Requirements			
MC2-1	1	MC2-4	2

- 150° Standard Adjustable Bracket
- Step adjustments at 15° increments
- Locks in position with hex screw

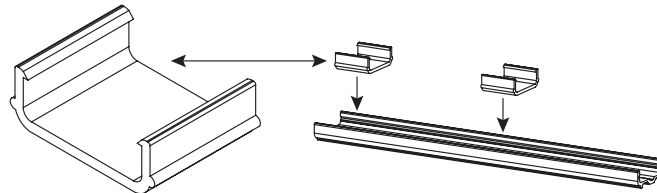


Up to 150°  
Bracket Hex Screw  
to Lock Position

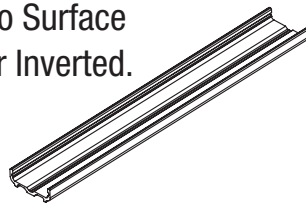
### OPTIONAL TRACK MOUNTING KIT (SSL-TRK1 & SSL-TRK4) (Kit includes track & adapter brackets)

TRK-ADAPTER Bracket Requirements			
SSL-TRK1	1	SSL-TRK4	2

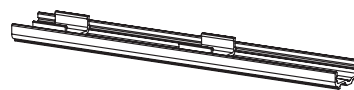
#### Track-Adapter



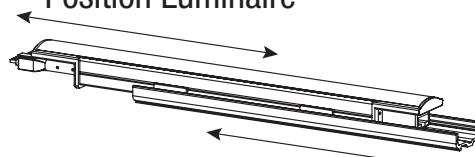
Track Mount to Surface  
at Any Angle or Inverted.



Plastic Track and Track Bracket  
with Snap Together Assembly  
(12 inch track shown)

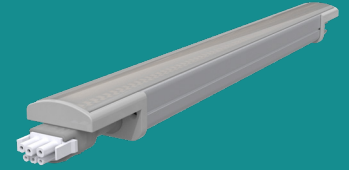


Slide in Track to  
Position Luminaire



Slide in Track to  
Position Luminaire

# MINI COVELINE 2

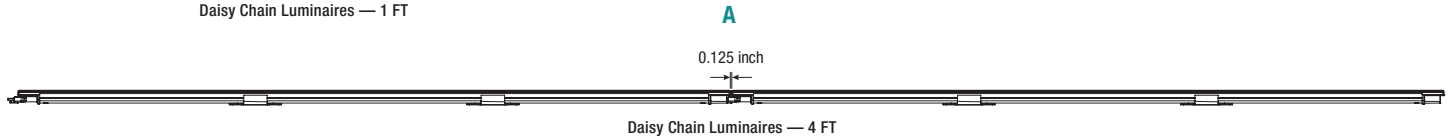
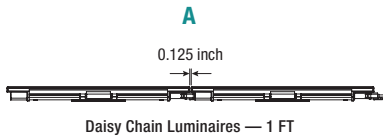


## Connectivity Options

### CONNECTIONS & CABLES

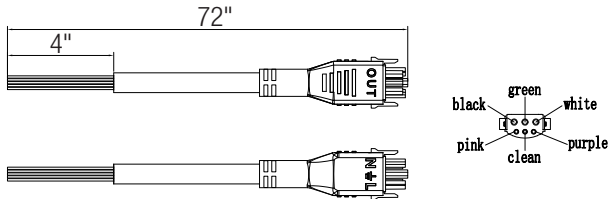
- A:** 0.125 Inch Between Luminaires
- B:** **SC6.0-6PIN** - 6.0 Foot (71Inch) Starter Connection Cord, 6 Pin
- C:** **EC0.5-6PIN** - 0.5 Foot (6 Inch) Extension Cord, 6 Pin
- C:** **EC1.0-6PIN** - 1.0 Foot (12 Inch) Extension Cord, 6 Pin
- C:** **EC2.0-6PIN** - 2.0 Foot (24 Inch) Extension Cord, 6 Pin
- C:** **EC5.0-6PIN** - 5.0 Foot (60 Inch) Extension Cord, 6 Pin
- D:** **TCAP-6PIN** - Termination Cap, 6 Pin

VOLTAGE	W/FT	MAX RUN LENGTH (FT)
120 VAC	10W	80
277 VAC	10W	160
120 VAC	8W	100
277 VAC	8W	200
120 VAC	6W	120
277 VAC	6W	240
120 VAC	4W	180
277 VAC	4W	370
120 VAC	2W	220
277 VAC	2W	440

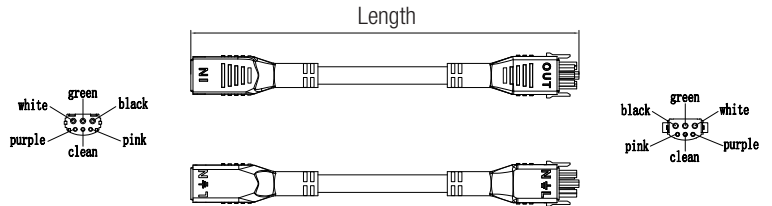


**ENSURE FIRST LUMINAIRE IS ORIENTED TO ACCEPT MALE CONNECTOR STARTER CABLE**

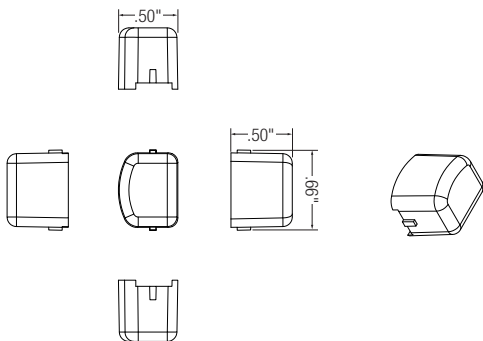
### B: STARTER CABLE



### C: EXTENSION CABLES

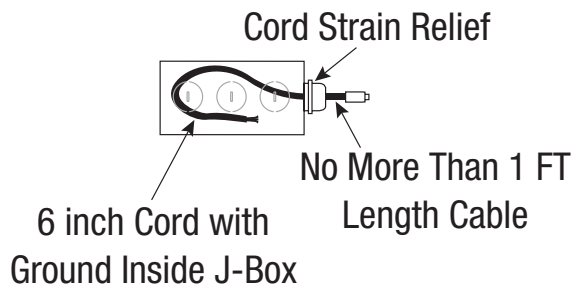


### D: TERMINATOR CAP — TCAP-6PIN



### STEEL JUNCTION BOX WIRING FOR STARTER CONNECTION CORD — SC6.0-6PIN

MC2 features Chicago Code Compliant (CCC) connectors. See below for Starter Connection Cord (SC6.0-6PIN) setup details.



Due to continuous development and improvements, specifications are subject to change without notice. Product use certifies agreement to Solid State Luminaires terms and conditions.