

Date:	Approved:
Type:	
Luminaire:	
Project:	

COVELINE XL WET 1.5



COVELINE XL WET 1.5 is an IP66 rated, powerful and versatile interior / exterior cove luminaire. **COVELINE XL WET 1.5** comes in a 1 ft, 4 ft or 6 ft nominal lengths and 27K, 3K, 35K, 4K or 5K color temperatures. The housing is constructed of extruded aluminum with tooled end caps and is rated for interior & exterior use. Features IP68 line voltage Plug N' Play connectors for easy installation. Power supply is integral, no remote driver required. Universal orientation fixture; up, down, horizontal or vertical positioning and 3 optical options. Flicker free dimmable to 5% full brightness with ELV trailing edge dimming.

SPECIFICATIONS

PHYSICAL

beam spread	30° x 80°, 120°
LEDs per foot	24
lengths/dimensions [LxWxH]	12.25" x 1.77" x 1.9", 47" x 1.77" x 1.9", 70.25" x 1.77" x 1.9"
weight	1.3 lbs
housing	Extruded aluminum housing with moulded end caps
lens	Clear, tempered glass with a frosted edge
mounting	Standard: surface mount bracket with (+/- 45° from center), optional: ADBW2-90 full 180° rotation (+/- 90° from center)
ingress protection	IP66 rated for wet, exterior location (Connectors IP68)
vibration resistance	Compliant with 3G ANSI C136.31
luminaire connections	Twist-lock IP68 rated, CCC

PERFORMANCE

color temperature	2700K, 3000K, 3500K, 4000K, 5000K
lumen output (per foot)	1061 lm, 1105 lm, 1152 lm, 1200 lm, 1248 lm
lumen maintenance	L70 > 70,000 hours
color consistency	3 SDCM / standard: 87 CRI, optional: 90 CRI
operating temperature	-40°F to 104°F (-40°C to 40°C)
warranty	5-Year limited warranty

ELECTRICAL

input voltage	Universal 120- 277 VAC
power supply	Integral Class II, electronic high-power factor > 94% @ 120V
certification	ETL / cETL listed
standards	UL1598/CSA C22.2 No. 250.0; IESLM-79/LM-80; FCC Part 15
power consumption	11W/ft @ 120V
dimming	ELV (reverse phase/trailing edge) ≤ 5%



COVELINE XL WET 1.5



Ordering Information

ORDERING INFORMATION

CVLXWET1.5														
MODEL	LENGTH	CCT		CRI	OPTICS		OPTIONS							
CVLXWET1.5	COVELINE XL WET 1.5	1	12 in. (305 mm)	WHITE LIGHT	MONO COLOR	CRI80	80 CRI	3080	30°x80° beam	WCL-1	Louver (Black) - 1 ft.			
		4	46.8 in. (1189 mm)	27K	2700K	AMB	Amber	CRI90	90 CRI	120	120°x120° beam	WCL-4	Louver (Black) - 4 ft.	
		6	70 in. (1778 mm)	3K	3000K	BLU	Blue					WCL-6	Louver (Black) - 6 ft.	
					35K	3500K	LTBLU	Light Blue					WCHS-1	Louver w/House Shield (Black) - 1 ft.
					4K	4000K	RED	Red					WCHS-4	Louver w/House Shield (Black) - 4 ft.
					5K	5000K							WCHS-6	Louver w/House Shield (Black) - 6 ft.

Accessories (Indicate the quantity needed for each item.) **REQUIRED:** Starter Cable (SC10W) and Terminator Cap (TCAPW) for every run. **Maximum Run Length** = 60 feet (120V)

_____ SC10W	10 ft. Starter Connection Cord	_____ EC12W	12 in. Extension Cord
_____ TCAPW	Terminator Cap	_____ EC24W	24 in. Extension Cord
		_____ EC60W	60 in. Extension Cord

Mounting Options (ADBW2 Included With Luminaire) (requirements vary for each luminaire ordered - see mounting pages for details)

_____ ADBW2-90	90° Adjustable Bracket (Bi-directional)	_____ CAA-6-8	Adjustable Cantilever Arm - 6" to 8"
_____ CA2-6	Cantilever Arm - 6"	_____ CAA-9-13	Adjustable Cantilever Arm - 9" to 13"
_____ CA2-12	Cantilever Arm - 12"	_____ CAA-12-18	Adjustable Cantilever Arm - 12" to 18"
_____ CA2-18	Cantilever Arm - 18"	_____ CAAX-KIT²	Mounting Kit (One CAAX-KIT comes with each Adjustable Cantilever Arm ordered)
_____ LS-6	Landscape Spike - 6"		
_____ HLS¹	Heavy Duty Landscape Spike		

¹Note: Two HLS Heavy Duty Landscape Spikes needed per 4-foot Luminaire, Three needed per 6-foot Luminaire.

²Note: One CAAX Adjustable Cantilever Arm needed per CLWET-1, Two needed per CLWET-4 (see page 6).

Use Module Only to Convert 0-10V Signal to ELV Dimming

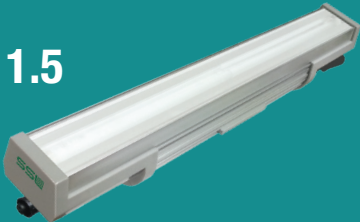
DIMO-10VELV is a dimming module that converts a 0-10V dimming signal to an ELV (electronic low-voltage) reverse phase dimming signal for ELV dimmable lighting products.

Control Components (Indicate the quantity needed for each item.) (1 module per run) (Indoor rated)

REQUIRED: Starter Cable (SC6) and Terminator Cap (TCAP) for every run.

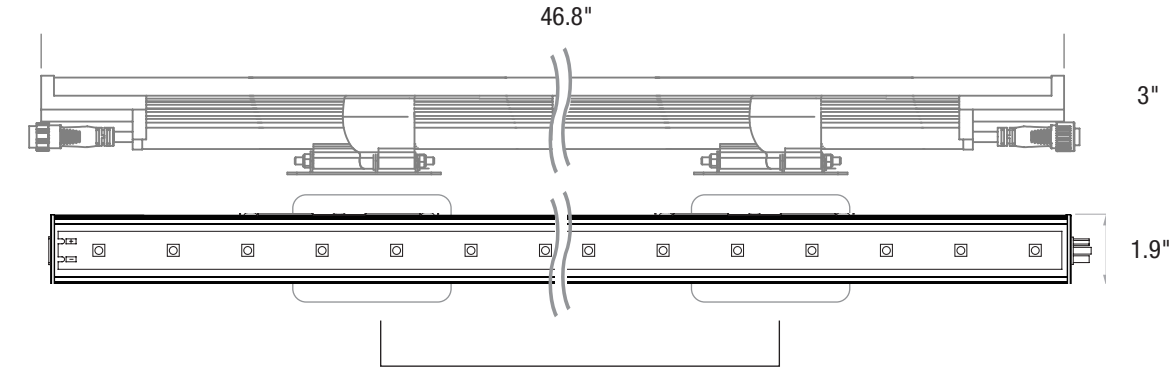
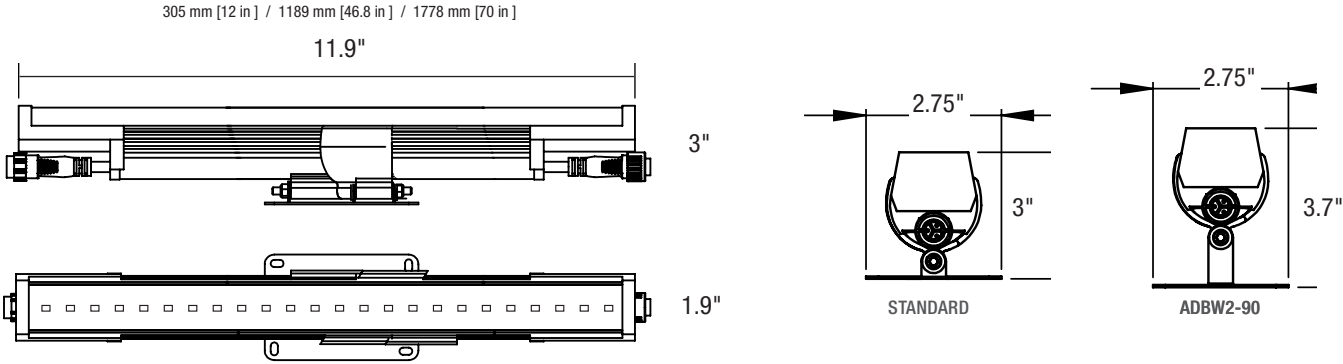
_____ DIMO-10VELV-UNV-OJBM-IJBM-BLA	0-10V ELV Dim Module, Output Junction Box Mount (12" lead wire), Input Junction Box Mount (12" lead wire), Interior Rated Enclosure, Black Anodized Alum.
_____ DIMO-10VELV-UNV-OCPPM-ICPPM-BLA	0-10V ELV Dim Module, Output Conduit Pipe Mount (96" lead wire), Input Conduit Pipe Mount (96" lead wire), Interior Rated Enclosure, Black Anodized Alum.

COVELINE XL WET 1.5

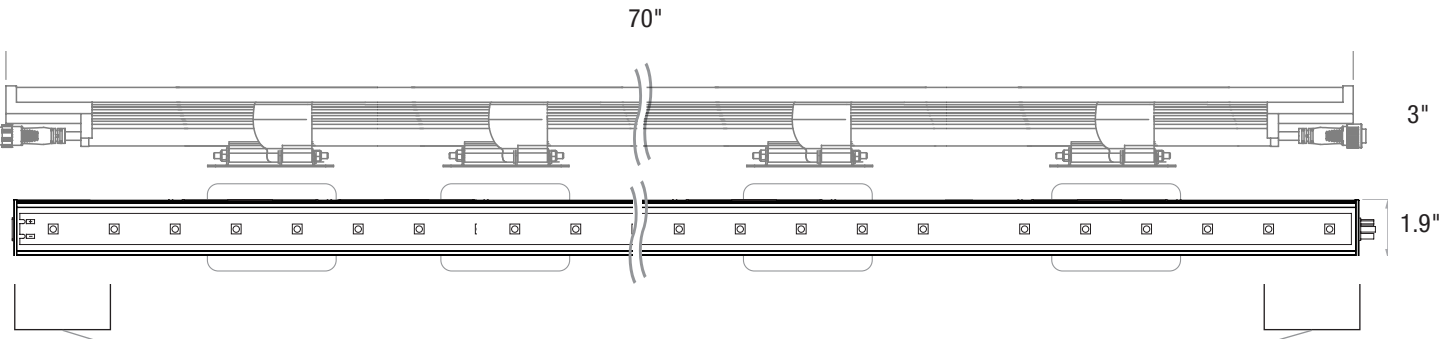


Ordering Information

DIMENSIONS WITH STANDARD BRACKET



Optimal spacing for bracket installation is 16" apart.



TO PREVENT VOIDING THE WARRANTY, DO NOT INSTALL BRACKETS WITHIN 2" OF THE ENDS OF LUMINAIRE.

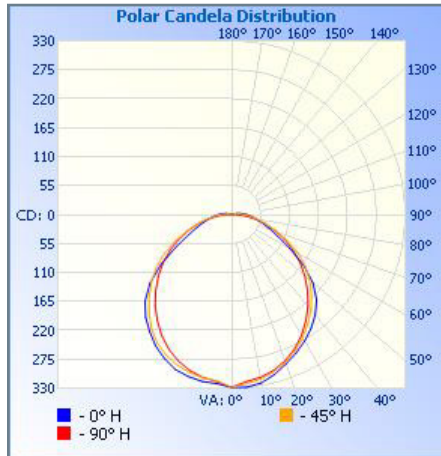
Due to continuous development and improvements, specifications are subject to change without notice. Product use certifies agreement to Solid State Luminaires terms and conditions.

COVELINE XL WET 1.5



Photometry

CVLXWET1.5-1-120-4K-120° Zonal Lumen Summary Illuminance at a Distance

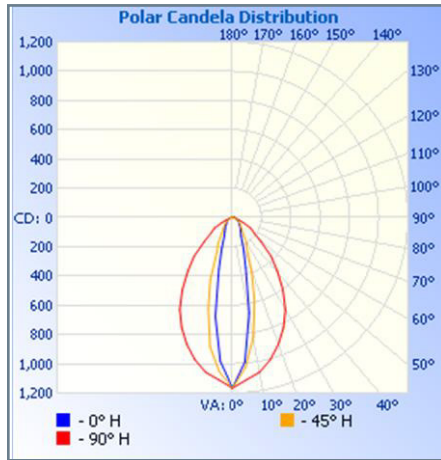


Zone	Lumens	% Luminaire
0-30	251.5	26.1%
0-40	412.7	42.8%
0-60	729.1	75.7%
60-90	212.8	22.1%
70-100	118.6	12.3%
90-120	21.6	2.2%
0-90	941.9	97.8%
90-180	21.6	2.2%
0-180	963.5	100%

Efficiency Total: 99%

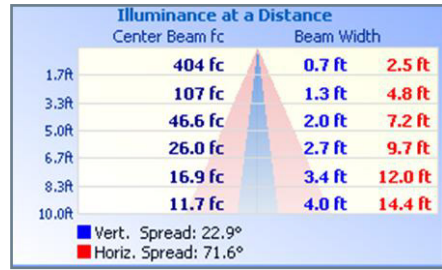


CVLXWET1.5-1-120-4K-30°x 80° Zonal Lumen Summary Illuminance at a Distance



Zone	Lumens	% Luminaire
0-30	448.9	50.1%
0-40	599.9	67%
0-60	795.9	88.9%
60-90	84.5	9.4%
70-100	44.5	5%
90-120	15.0	1.7%
0-90	880.4	98.3%
90-180	15.0	1.7%
0-180	895.4	100%

Efficiency Total: 99%



Due to continuous development and improvements, specifications are subject to change without notice. Product use certifies agreement to Solid State Luminaires terms and conditions.

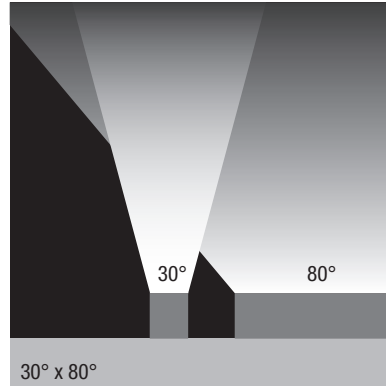
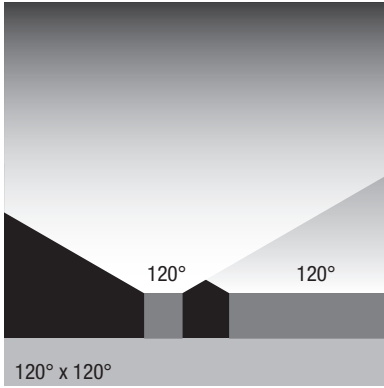
COVELINE XL WET 1.5



Photometry

CVLXWET1.5 AVAILABLE OPTICS

FIND IES FILES ON SOLIDSTATELUMINAIRES.COM



PERFORMANCE

DIMMING

Model	Connected Wattage	Delivered Lumens				
		2700K	3000K	3500K	4000K	5000K
CVLXWET1.5-1	11	1061	1105	1152	1200	1248
CVLXWET1.5-4	44	4244	4420	4608	4800	4992
CVLXWET1.5-6	66	6366	6630	6912	7200	7488

TRIAC, REVERSE PHASE DIMMING

Model	Description
DELV	Lutron Diva Dimmer 300P
SELV	Lutron Skylark Dimmer 153P
SCL	Lutron Skylark Dimmer 300P



DELV

SELV

SCL

Dimmers sold by others.

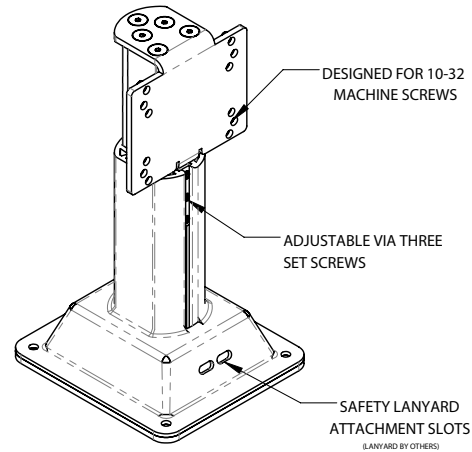
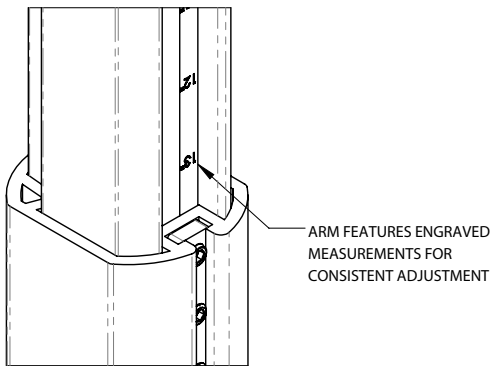
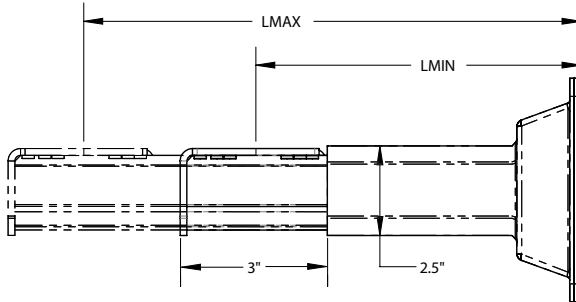
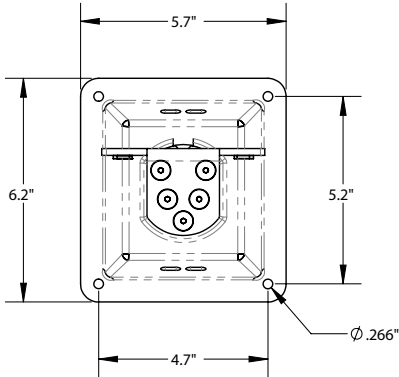
COVELINE XL WET 1.5



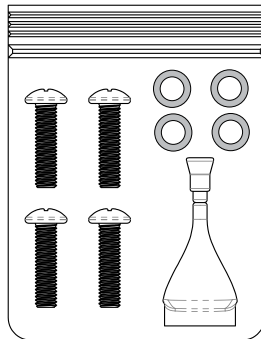
Mounting Options

ADJUSTABLE CANTILEVER ARM — CAA-6-8, CAA-9-13, CAA-12-18		
Model	LMIN	LMAX
CAA-6-8	6"	8"
CAA-9-13	9"	13"
CAA-12-18	12"	18"

ADJUSTABLE CANTILEVER ARM — CAAX (Quantity / Luminaire)	
Luminaire	Minimum Required Quantity
1 FT	1
4 FT	2

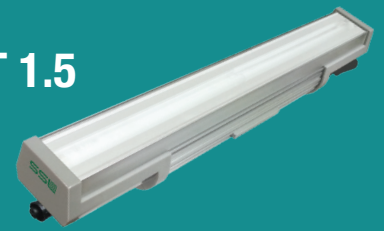


CAAX-KIT (1 Kit Included Per Arm)
4X Stainless Steel 10-32 X 3/4" Screws
4X Stainless Steel Lock Washers
Threadlocker Capsule



COMPATIBLE PRODUCTS	
LZWET	LZXWET
CLZWET	CLWET
ECVLWET-1.5	ECVLXWET-1.5
CVLWET-1.5	CVLXWET-1.5

Due to continuous development and improvements, specifications are subject to change without notice. Product use certifies agreement to Solid State Luminaires terms and conditions.

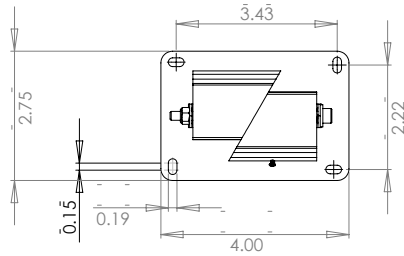
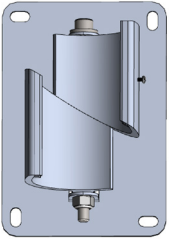


Mounting Options

STANDARD ADJUSTABLE BRACKET REQUIREMENTS

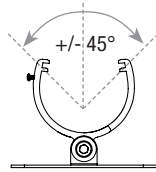
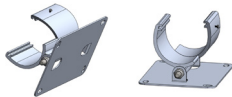
Minimum Bracket Requirement			
CVLXWet-1	1	CVLXWet-4	2
		CVLXWet-6	3

STANDARD ADJUSTABLE BRACKET (ADBW2)



Universal Orientation

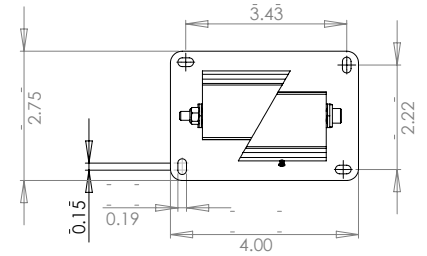
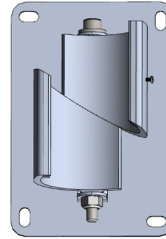
- Mounts to horizontal or vertical surfaces
- Easy installation w/luminaire in position
- +/- 45° to surface



90° ADJUSTABLE BRACKET REQUIREMENTS

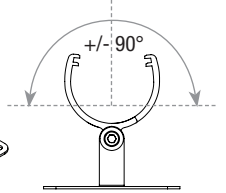
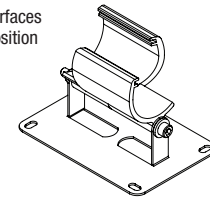
Minimum Bracket Requirement			
CVLXWet-1	1	CVLXWet-4	2
		CVLXWet-6	3

90° ADJUSTABLE BRACKET (ADBW2-90)



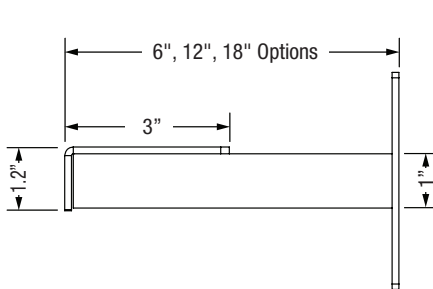
Universal Orientation

- Mounts to horizontal or vertical surfaces
- Easy installation w/luminaire in position
- +/- 90° to surface

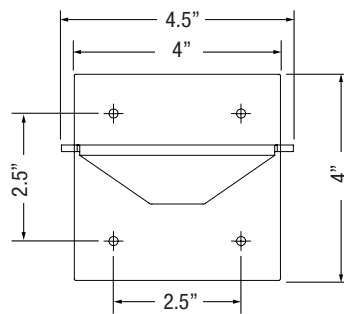


CANTILEVER ARM (CA2)

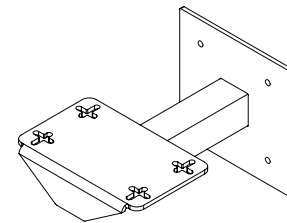
CA2	Arm Length	Luminaire	CA2 Requirement
CA2-6	6"	1-foot	1
CA2-12	12"	4-foot	2
CA2-18	18"		



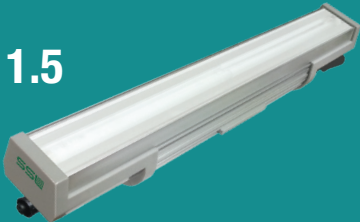
SIDE VIEW



FRONT VIEW

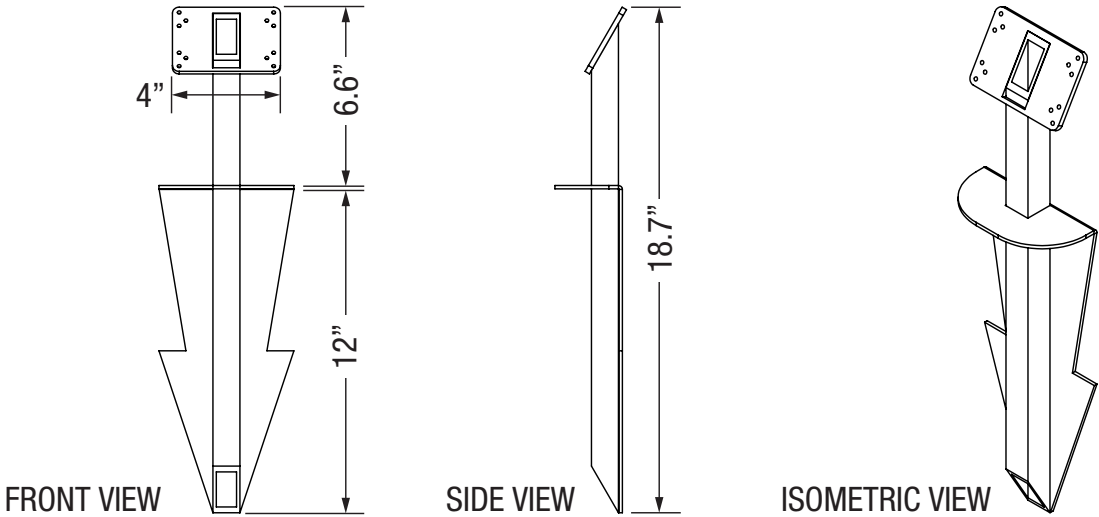


ISOMETRIC VIEW

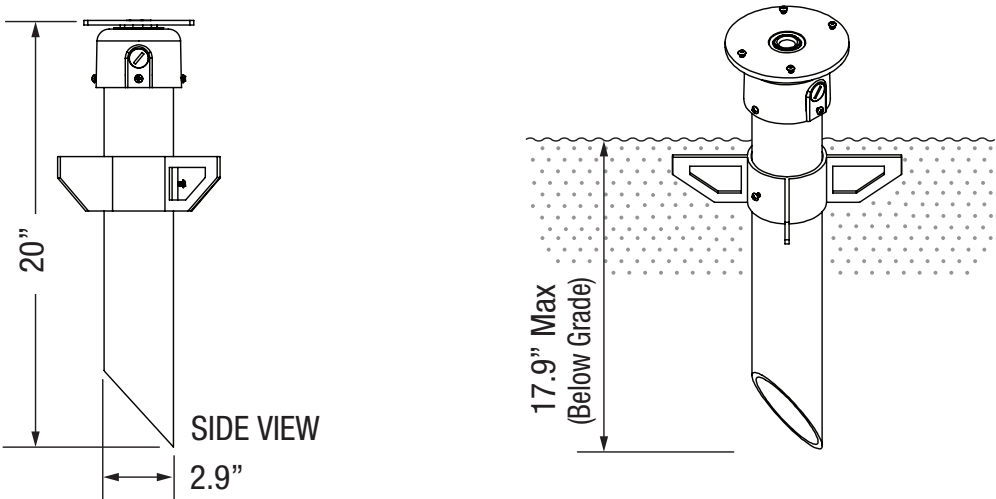


Mounting Option Accessories

LANDSCAPE SPIKE - LS-6



HEAVEY DUTY LANDSCAPE SPIKE - HLS



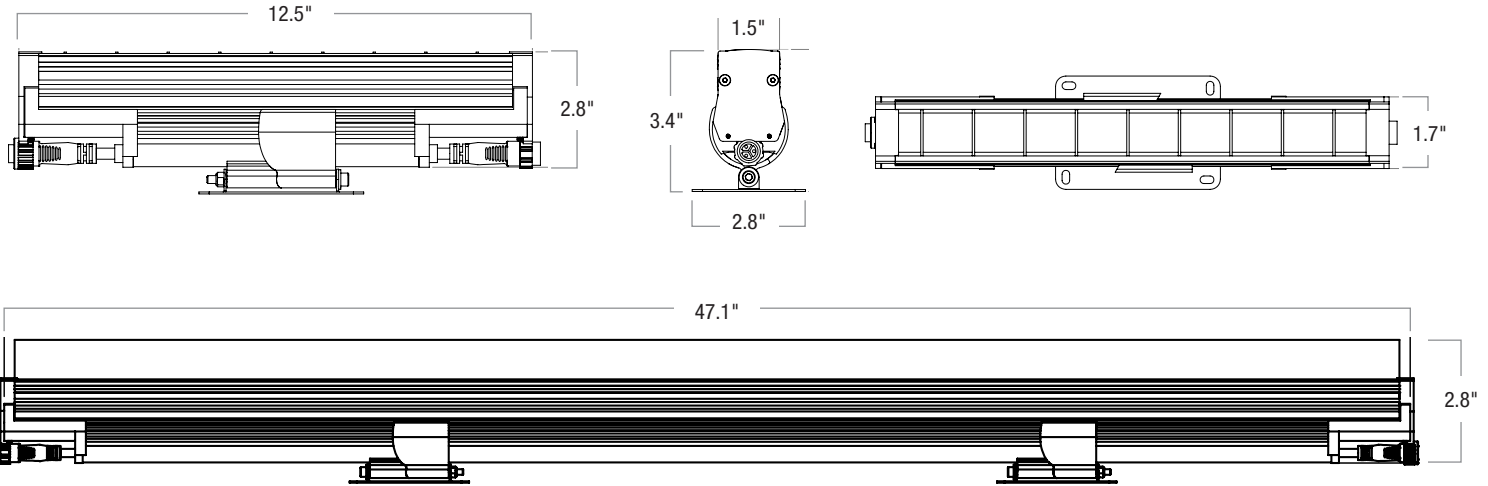
Due to continuous development and improvements, specifications are subject to change without notice. Product use certifies agreement to Solid State Luminaires terms and conditions.

COVELINE XL WET 1.5

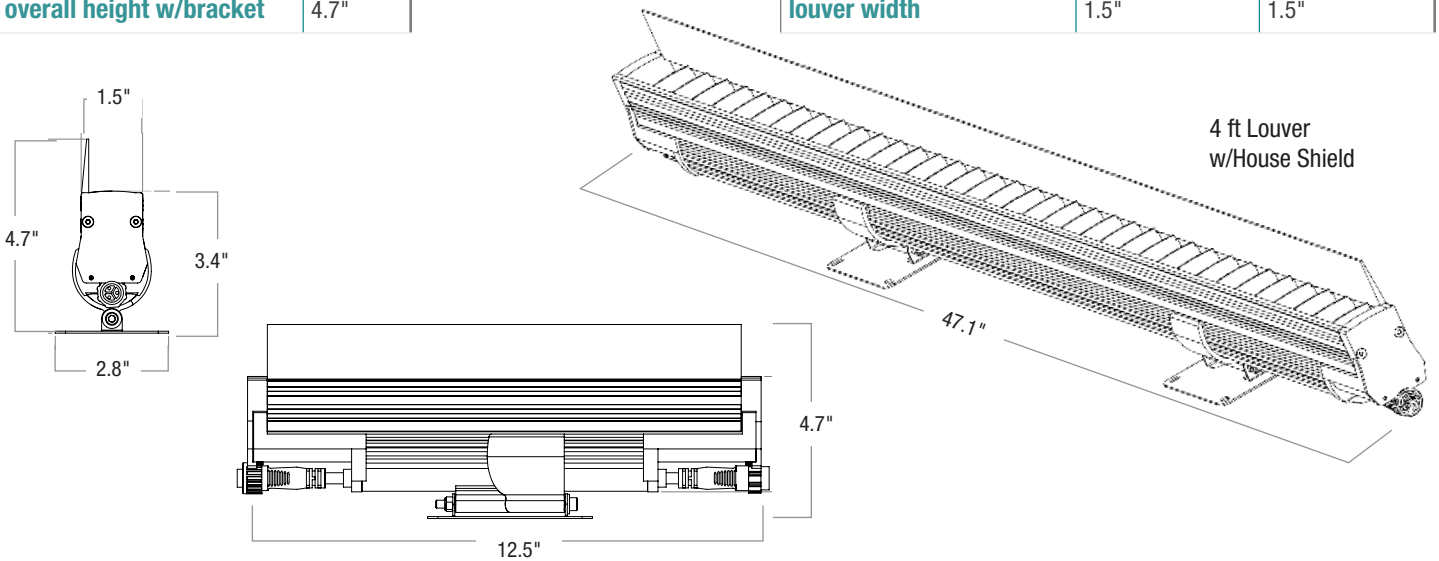


Accessories

LOUVER - WCL		1FT	4FT
louver height	.25"	12.5"	47.1"
overall height w/bracket	3.4"	1.5"	1.5"



HOUSE SHIELD - WCHS		1FT	4FT
shield height	1.3"	12.5"	47.1"
overall height w/bracket	4.7"	1.5"	1.5"

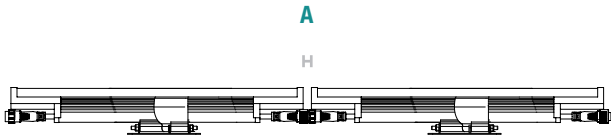


Due to continuous development and improvements, specifications are subject to change without notice. Product use certifies agreement to Solid State Luminaires terms and conditions.



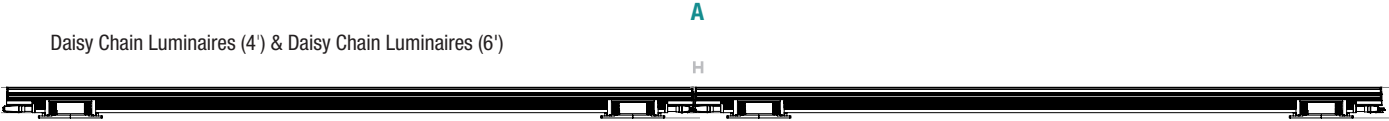
Connectivity Options

CONNECTIONS & CABLES



Daisy Chain Luminaires (1')

- A:** MIN/0" - MAX/.38" between Luminaires
- B:** SC10W - 10ft Starter Cord
- C:** EC12W 12 in. Extension Cord
- C:** EC24W 24 in. Extension Cord
- C:** EC60W 60 in. Extension Cord
- D:** TCAPW 1.13" Terminator Cap



Daisy Chain Luminaires (4') & Daisy Chain Luminaires (6')

B: STARTER CABLES

INSURE FIRST LUMINAIRE IS ORIENTED TO ACCEPT MALE CONNECTOR STARTER CABLE



C: EXTENSION CABLES



D: TERMINATOR CAP TCAP



Due to continuous development and improvements, specifications are subject to change without notice. Product use certifies agreement to Solid State Luminaires terms and conditions.

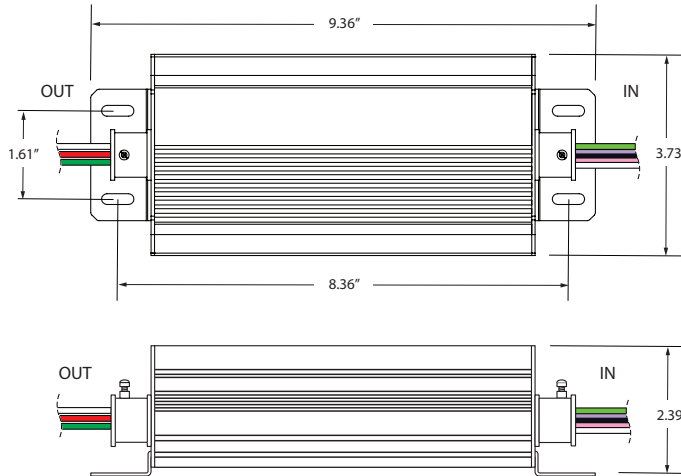


Control Components

CONTROL OVERALL DIMENSIONS (DIMO-10VELV) ALL VERSIONS

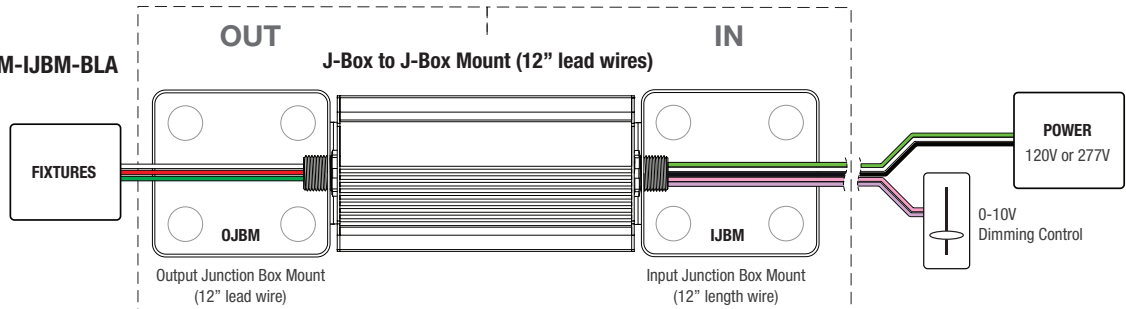
Use Module Only to Convert 0-10V Signal to ELV Dimming

Converts 0-10V signal for ELV Dimming protocol.



CONTROL CONNECTIVITY (DIMO-10VELV) EACH VERSION

DIMO-10VELV-UNV-OJBM-IJBM-BLA



DIMO-10VELV-UNV-OCPM-ICPM-BLA

