

Date:	Approved:
Type:	
Luminaire:	
Project:	

eCOVELINE XL 0-10V



The **eCOVELINE XL 0-10V** is designed to work with standard 0-10V dimming system. This economical and versatile cove luminaire has two optical solutions. It's available in 1 ft, or 4 ft nominal lengths and 27K, 3K, 35K or 4K color temperatures. The housing is constructed of extruded aluminum with tooled end caps and is IP20 rated for interior use only. Features 5-pin, Plug N' Play connectors for easy installation. Integral driver provides 0-10V dimming capabilities.



QuickShip max order = 25 pcs

SPECIFICATIONS

PHYSICAL

beam spread	60°, 120°
LEDs per foot	14 per foot
mounting	Standard: surface mount bracket with (+/- 15° from center), optional: ADB2 full 180° rotation (+/- 90° from center)
housing	Extruded aluminum housing with tooled end caps
lens	Etched polycarbonate
ingress protection	Dry interior locations IP20 rated
luminaire connections	Daisy chain with male and female, 5-PIN, plug-n-play connectors
weight	1 foot (1 lbs), 4 foot (4 lbs)

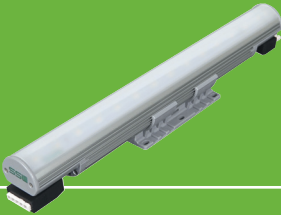
PERFORMANCE

color temperature	2700K, 3000K, 3500K, 4000K
lumen output	579 lm/ft, 604 lm/ft, 628 lm/ft, 653 lm/ft
lumen maintenance	L70 ≥ 70,000 hours
operating temperature	-4°F to 104°F (-20°C to 40°C)
color consistency	3 SDCM, 84CRI, optional: 90CRI
warranty	5-Year limited warranty

ELECTRICAL

input voltage	Universal 120 - 277 VAC
power supply	Integral Class I, electronic high-power factor 94% @ 120V
interface	Dimmable to 3% full brightness, 0-10V Dimming (Standard), 5mA max, source current for max run length
certification	ETL/cETL Listed
standards	UL 1598, CSA C22.2 No. 250.0 - Class I, IES LM-79/LM-80
power consumption	1 ft @ full power (5.8W +/- 10%, 4 ft @ full power (23.2W +/- 10%)

Ordering Information



QuickShip max order = 25 pcs

PART NUMBERS											
ECVLX10V											
MODEL		LENGTH		CCT		CRI		OPTICS		OPTIONS	
ECVLX10V	eCOVELINE XL 0-10V	☑ 1	12 in. [305 mm]	27K	2700K	☑ 84CRI	84CRI	60	60° beam	CVLL-1	coveline louver (1ft)
		☑ 4	46.8 in. [1219 mm]	☑ 3K	3000K	90CRI	90CRI	☑ 120	120° beam	CVLL-4	coveline louver (4ft)
				☑ 35K	3500K					DVL-1	direct view lens (1ft)
				4K	4000K					DVL-4	direct view lens (4ft)
										DVL-ENDCAP	direct view lens end cap (pair) must have 1 pair for every DVL

Cable Accessories (Indicate the quantity needed next to each item.)

REQUIRED: Starter Cable (SC6-10V) and Terminator Cap (TCAP-10V) for every run. **Maximum Run Length** = 120 feet

- ☑ _____ **SC6-10V** 6 ft. Starter Connection Cord
- ☑ _____ **TCAP-10V** Terminator Cap
- ☑ _____ **EC06-10V** 6 in. Extension Cord
- ☑ _____ **EC12-10V** 12 in. Extension Cord
- ☑ _____ **EC24-10V** 24 in. Extension Cord
- ☑ _____ **EC60-10V** 60 in. Extension Cord

Mounting Options (Indicate the quantity needed for each item.)

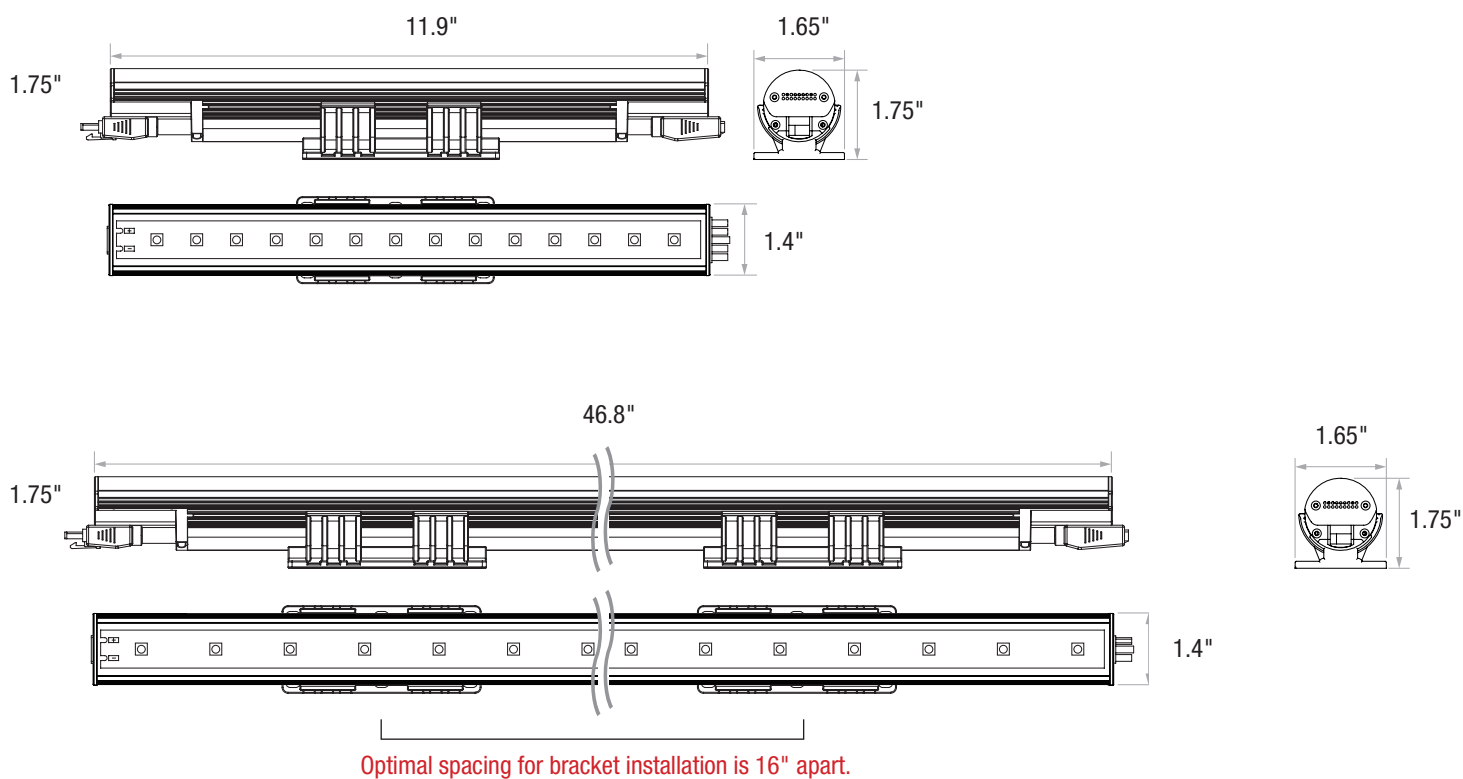
- ☑ _____ **ADB2** 180° Adjustable Bracket
- _____ **CA2-6** Cantilever Arm - 6"
- _____ **CA2-12** Cantilever Arm - 12"
- _____ **CA2-18** Cantilever Arm - 18"

Dimensions

eCOVELINE XL 0-10V



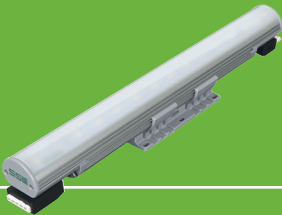
DIMENSIONS WITH STANDARD BRACKET



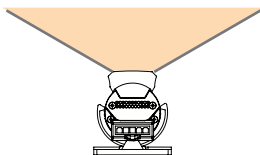
TO PREVENT VOIDING THE WARRANTY, DO NOT INSTALL BRACKETS WITHIN 2" OF THE ENDS OF LUMINAIRE.

Photometry

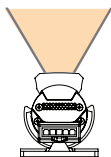
eCOVELINE XL 0-10V



ECVLX10V 1FT 35K 120°



ECVLX10V 1FT 4K 60°



PERFORMANCE

Model	Delivered Lumens			
	2700K	3000K	3500K	4000K
ECVLX10V-1	579	604	628	653
ECVLX10V-4	2316	2416	2512	2612

CONTROL COMPONENT

0-10V DIMMING

Model	Description
IP710-LFZ	Leviton 0-10V Dimmer
DVSTV	Lutron Diva 0-10V Dimmer



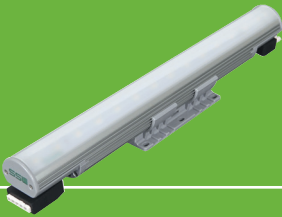
IP710-LFZ

DVSTV

Dimmers are sold by others. FC|SSL does not recommend dimmers that have not been tested with their luminaires.

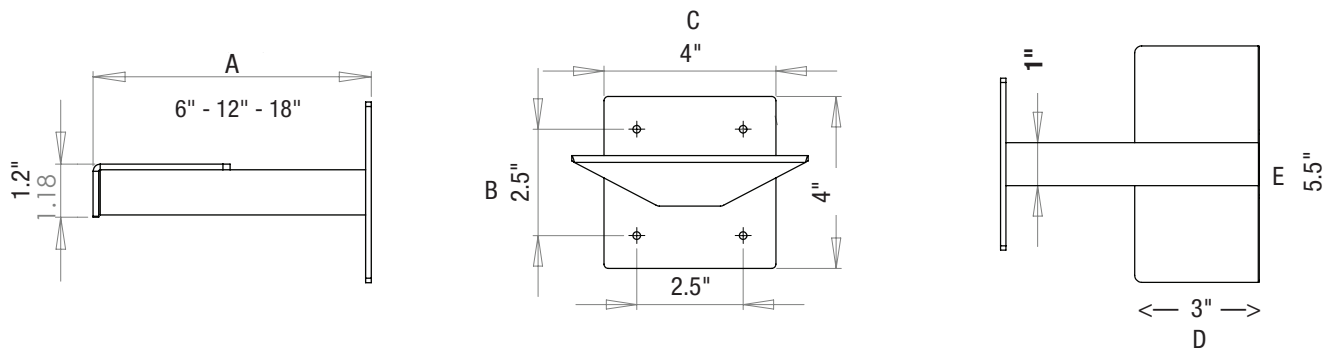
Mounting Options

eCOVELINE XL 0-10V

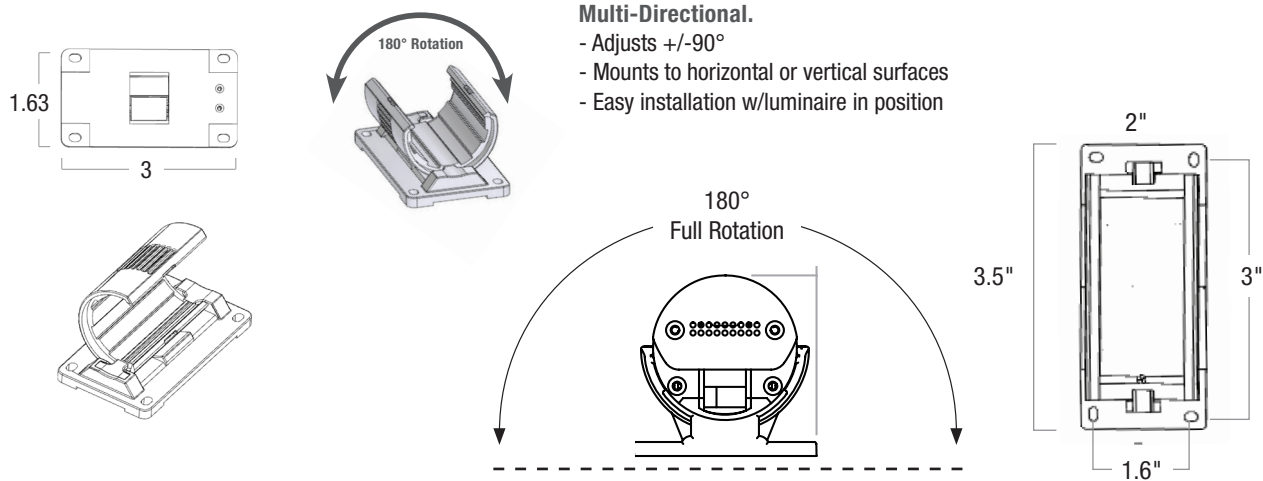


CANTILEVER ARM - Available in 3 Lengths

CA2	(A) arm length	mounting height (B)	mounting width (C)	bracket plate length (D)	bracket plate width (E)	ECVLX10V	CA2 Requirement
CA2-6	6"	4"	4"	3"	5.5"	1'	1
CA2-12	12"					4'	2
CA2-18	18"						



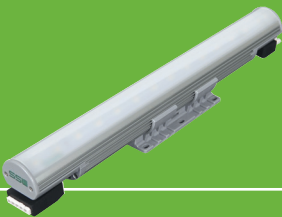
OPTIONAL ADJUSTABLE BRACKET (ADB2)



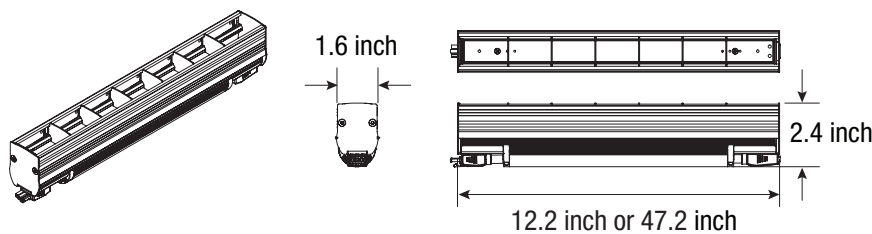
Multi-Directional.
 - Adjusts +/-90°
 - Mounts to horizontal or vertical surfaces
 - Easy installation w/luminaire in position

Accessories

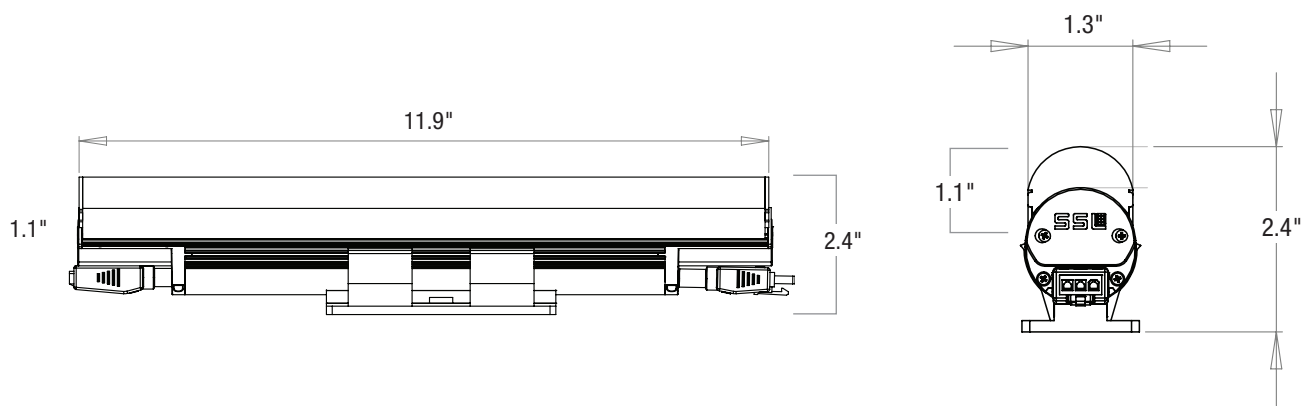
eCOVELINE XL 0-10V



LOUVER (BLACK) - CVLL	1FT	4FT
height	2.4"	2.4"
length	12.2"	47.2"
width	1.6"	1.6"

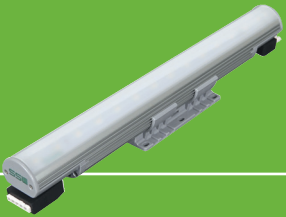


DIRECT DIFFUSER LENS - DVL	1FT	4FT
total height	2.4"	2.4"
diffuser height	1.1"	1.1"
length	11.9"	46.8"
width	1.3"	1.3"



Connectivity Options

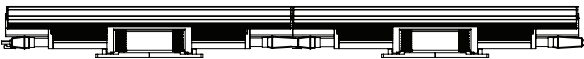
eCOVELINE XL 0-10V



CONNECTIONS & CABLES

A:1

H



Daisy Chain Luminaires (1')

A:4

H

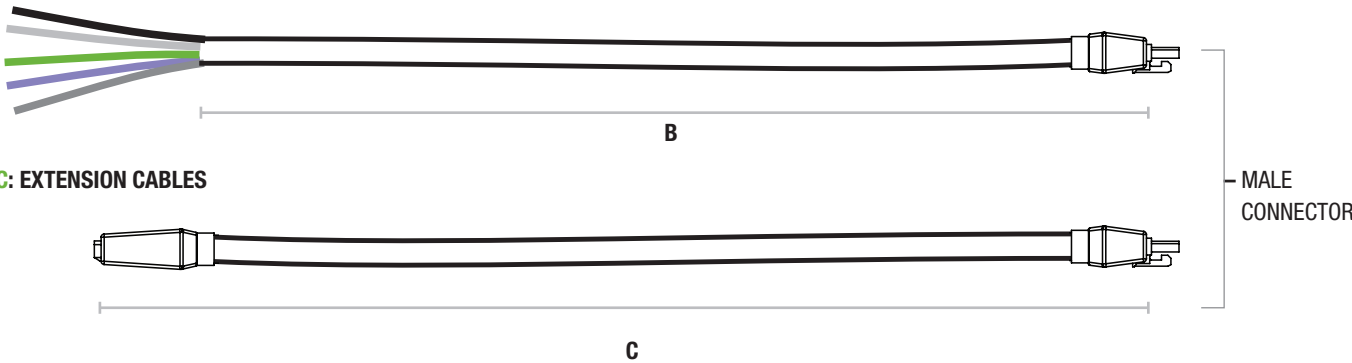


Daisy Chain Luminaires (4')

- A1: MIN/.5" - MAX/.8" between luminaires
- A4: MIN/0" - MAX/.6" between luminaires
- B: SC6-10V - 6ft Starter Cord
- C: EC6-10V 6 in. Extension Cord
- C: EC12-10V 12 in. Extension Cord
- C: EC24-10V 24 in. Extension Cord
- C: EC60-10V 60 in. Extension Cord
- D: TCAP-10V 1.13" Terminator Cap

B: STARTER CABLES

INSURE FIRST LUMINAIRE IS ORIENTED TO ACCEPT MALE CONNECTOR STARTER CABLE



C: EXTENSION CABLES

D: TERMINATOR CAP
(TCAP-10V)

D



WIRE COLOR KEY

Black (+)	Positive
White (-)	Neutral
Green (≡)	Ground
Violet (<+)	Data (+)
Gray (<-)	Data (-)