

Date: _____

Type: _____

Fixture: _____

Project: _____

Approved:

COVELINE WET



The **COVELINE WET** is a powerful and versatile interior / exterior cove luminaire. **COVELINE WET** comes in a 1 ft, 4 ft or 6 ft nominal lengths with 27K, 3K, 35K or 4K and static color temperatures of Red, Green, Blue and Amber. The housing is extruded aluminum with tooled end caps, IP66 rated for interior & exterior use. Features IP68 line voltage Plug N' Play connectors for exterior linear runs. Power supply is integral, no remote driver required. Universal orientation fixture; up, down, horizontal or vertical positioning. Flicker free dimmable to 3% full brightness with ELV trailing edge dimming.



SPECIFICATION

color temperature	2700K	3000K	4000K	
lumen output	762 per foot	790 per foot	905 per foot (35K also)	
beam spread	10° - 25° - 40° - 80° - 120° - 10° x 40° - 30° x 60° - 67° x 140° (ASYM) - 21° x 56° (ASYM)			
LEDs per foot	9			
color consistency	3 SDCM / 84CRI			
lifetime	> 70,000 hours / L70 or better			
input voltage	Universal 120-277V AC			
power consumption	9W			
dimensions [L x W x H]	12.25" x 1.77" x 1.9"	47" x 1.77" x 1.9"	70.25" x 1.77" x 1.9"	
weight	1.3 lbs. per foot			
housing	extruded aluminum housing with tooled end caps			
lens	etched polycarbonate			
mounting	surface mounting with (+/- 15°), Adjustable Bracket (ADB2 +/-90° Bi-directional)			
operating temperature	-20°C to 40°C			
junction temperature	73°C @ T ^a 25°C			
interface	dimmable to 3% full brightness (ELV) electronic low-voltage trailing edge, synchronized w/ soft shut-off			
power supply	integral Class II, electronic high-power factor 94%			
certification	ETL / cETL or CE			
environment	IP66 wet, exterior location (Connectors IP68)			
warranty	5 year limited warranty (refer to website for details)			

Due to continuous development and improvements, specifications are subject to change without notice. Solid State Luminaires reserves the right to change lab test details or specifications without notice. Product use certifies agreement to Solid State Luminaires terms and conditions.



Ordering Information

ORDERING INFORMATION

CVLWET		UNV										
MODEL	LENGTH	VOLTAGE	CCT	OPTICS		OPTIONS						
CVLWET COVELINE WET	1	305 mm [12 in]	UNV 120-277V	27K	2700K	10	10°x10° beam	120	120°x120° beam (standard)		WC1L-1	1' Louver (Black)
	4	1189 mm [46.8 in]		3K	3000K	25	25°x 25° beam	1040	10° x 40° beam		WC1L-4	4' Louver (Black)
	6	1778 mm [70 in]		35K	3500K	40	40°x 40° beam	3060	30° x 60° beam		WC1L-6	6' Louver House Shield (Blk)
				4K	4000K	80	80°x 80° beam	67140	67° x 140° Asymmetric		WC1HS-1	1' Louver House Shield (Blk)
				RED	Red **			Asym	21°x 56° Asymmetric		WC1HS-4	4' Louver House Shield (Blk)
				GRN	Green **					WC1HS-6	6' Louver House Shield (Blk)	
		BLU	Blue **									
		AMB	Amber **									

** Consult Factory (minimum order quantity)

Accessories (Indicate the quantity needed for each item.) **REQUIRED:** Starter Cable (SC10W) and Terminator Cap (TCAPW) for every run. **Maximum Run Length = 60 feet**

_____ SC10W 10 ft. Starter Connection Cord	_____ EC12W 12 in. Extension Cord	_____ CA2-6 6" Cantilever Arm	_____ LS-6 Landscape Spike - 6"
_____ TCAPW Terminator Cap	_____ EC24W 24 in. Extension Cord	_____ CA2-12 12" Cantilever Arm	
_____ ADBW2 45° (+/-) Adjustable Bracket	_____ EC60W 60 in. Extension Cord	_____ CA2-18 18" Cantilever Arm	
_____ ADBW2-90 90° (+/-) Adjustable Bracket			

Use Module Only to Convert 0-10V Signal to ELV Dimming

DIMO-10VELV is a dimming module that converts a 0-10V dimming signal to an ELV (electronic low-voltage) reverse phase dimming signal for ELV dimmable lighting products.

Control Components (Indicate the quantity needed for each item.) (1 module per run) (Indoor rated)

REQUIRED: Starter Cable (SC6) and Terminator Cap (TCAP) for every run.

_____ DIMO-10VELV-UNV-OJBM-IJBM-BLA 0-10V ELV Dim Module, Output Junction Box Mount (12" lead wire), Input Junction Box Mount (12" lead wire), Interior Rated Enclosure, Black Anodized Alum.
_____ DIMO-10VELV-UNV-OCPM-ICPM-BLA 0-10V ELV Dim Module, Output Conduit Pipe Mount (96" lead wire), Input Conduit Pipe Mount (96" lead wire), Interior Rated Enclosure, Black Anodized Alum.

Due to continuous development and improvements, specifications are subject to change without notice. Solid State Luminaires reserves the right to change lab test details or specifications without notice. Product use certifies agreement to Solid State Luminaires terms and conditions.

COVELINE WET

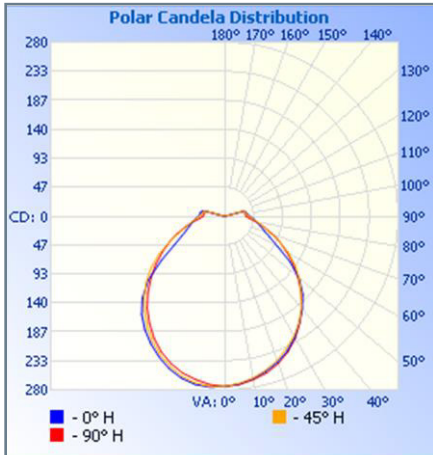


Photometry

CVLWET-1-120-4K-905-120°

Zonal Lumen Summary

Illuminance at a Distance

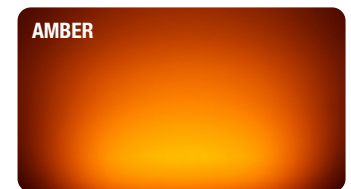
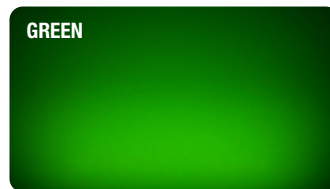


Zone	Lumens	% Luminaire
0-30	211.3	24%
0-40	344.9	39.1%
0-60	604.4	68.5%
60-90	209.8	23.8%
70-100	157.4	17.9%
90-120	67.6	7.7%
0-90	814.2	92.3%
90-180	67.6	7.7%
0-180	881.8	100%

Efficiency Total: 99%



COLORS



PERFORMANCE

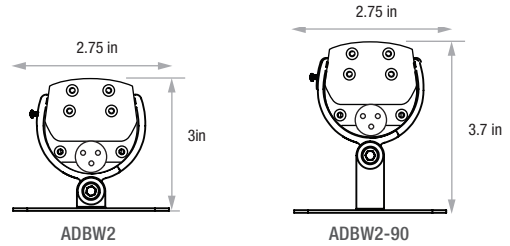
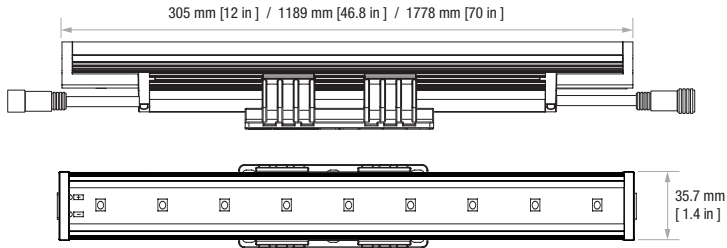
Model	Connected Wattage	Delivered Lumens				
		2700K	3000K	4000K	Blue	Amber
CVLWET-1	9W	762	790	905	360	525
CVLWET-4	36W	3048	3160	3620	1440	2100
CVLWET-6	54W	4572	4740	5430	2106	3150

Due to continuous development and improvements, specifications are subject to change without notice. Solid State Luminaires reserves the right to change lab test details or specifications without notice. Product use certifies agreement to Solid State Luminaires terms and conditions.

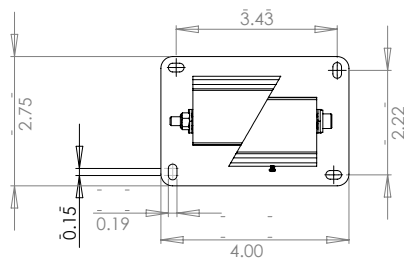
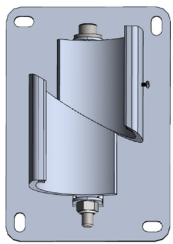


Dimensions

Available in 3 lengths

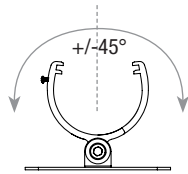
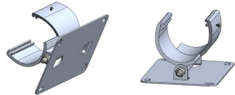


ADJUSTABLE BRACKET (ADBW2)

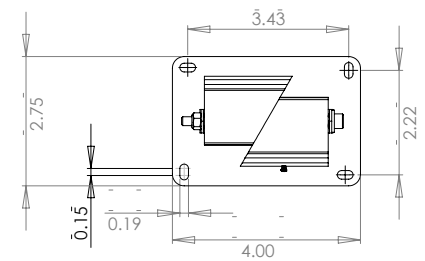
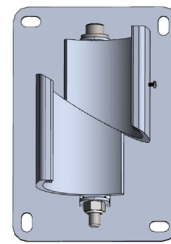


Universal Orientation

- Mounts to horizontal or vertical surfaces
- Easy installation w/fixture in position
- +/-45° to surface

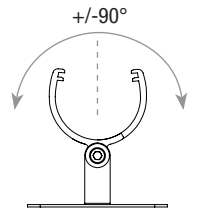
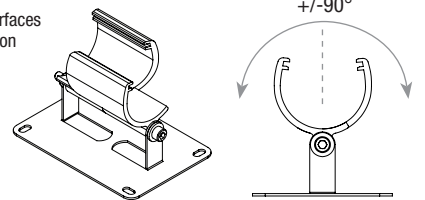


90° ADJUSTABLE BRACKET (ADBW2-90)



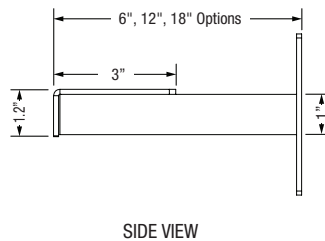
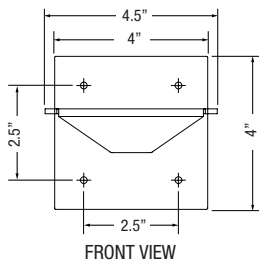
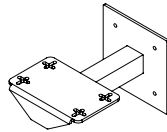
Universal Orientation

- Mounts to horizontal or vertical surfaces
- Easy installation w/fixture in position
- +/-90° to surface



CANTILEVER ARM (CA2)

CA2	arm length	Fixture	CA2 Required
CA2-6	6"	1-foot	1
CA2-12	12"	4-foot	2
CA2-18	18"		



Fixture Size Bracket Requirements

Model - Length	Number of Brackets Required
ECVLXWET - 1	1
ECVLXWET - 4	2
ECVLXWET - 6	3

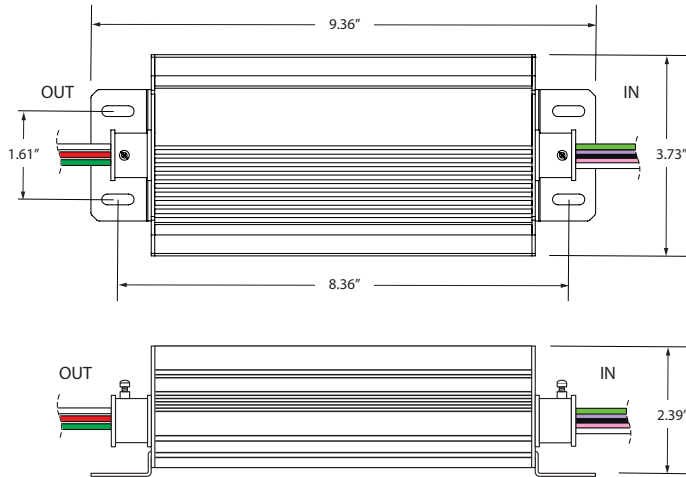
Due to continuous development and improvements, specifications are subject to change without notice. Solid State Luminaires reserves the right to change lab test details or specifications without notice. Product use certifies agreement to Solid State Luminaires terms and conditions.

Control Components

CONTROL OVERALL DIMENSIONS (DIMO-10VELV) ALL VERSIONS

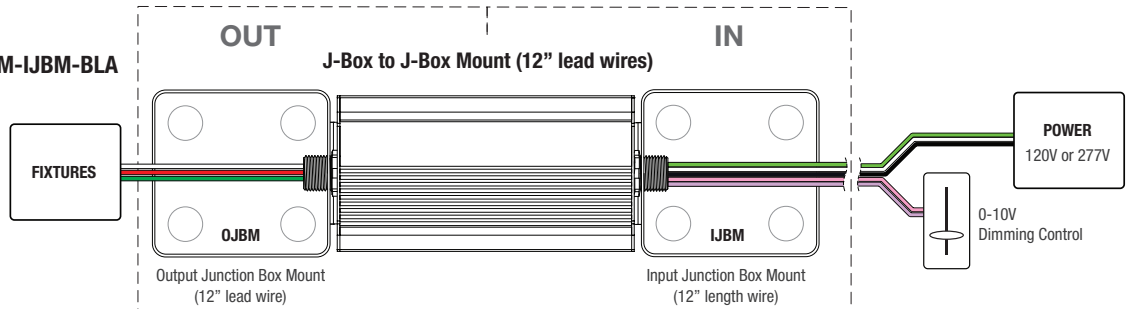
Use Module Only to Convert 0-10V Signal to ELV Dimming

Converts 0-10V signal for ELV Dimming protocol.

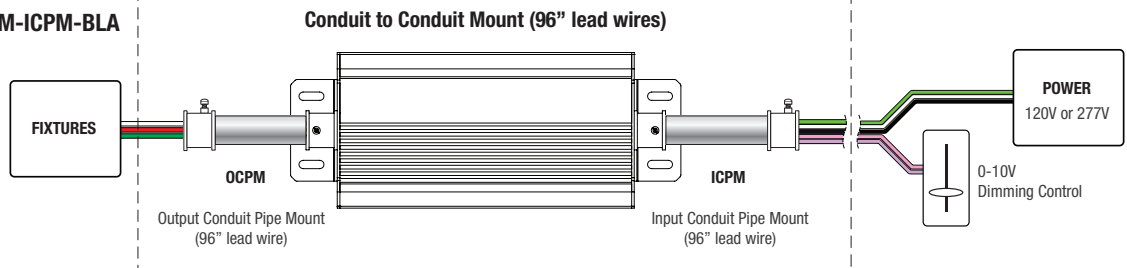


CONTROL CONNECTIVITY (DIMO-10VELV) EACH VERSION

DIMO-10VELV-UNV-OJBM-IJBM-BLA



DIMO-10VELV-UNV-OCPM-ICPM-BLA



Due to continuous development and improvements, specifications are subject to change without notice. Solid State Luminaires reserves the right to change lab test details or specifications without notice. Product use certifies agreement to Solid State Luminaires terms and conditions.