

Date:

Approved:

Type:

Fixture:

Project:

## COVELINE WET 1.5



**COVELINE WET 1.5** is a powerful and versatile interior / exterior cove luminaire. The **COVELINE WET 1.5** comes in a 1 ft, 4 ft or 6 ft nominal lengths and 27K, 3K, 35K, 4K or 5K color temperatures, as well as static color choices. The housing is constructed of extruded aluminum with tooled end caps and is IP66 rated for interior & exterior use. Features IP68 line voltage Plug N' Play connectors for easy installation. Power supply is integral, no remote driver required. Universal orientation fixture; up, down, horizontal or vertical positioning and 9 optical solutions. Flicker free dimmable to 5% full brightness ELV trailing edge dimming.

### SPECIFICATIONS

#### PHYSICAL

beam spread	10°   10° x 40°   120°   25°   30° x 60°   40°   80°   67° x 140°   21° x 56° asymmetric		
LEDs per foot	14		
dimensions	12.25" x 1.77" x 1.9"	47" x 1.77" x 1.9"	70.25" x 1.77" x 1.9"
weight	1.3 lbs		
housing	extruded aluminum housing with moulded end caps		
lens	clear, tempered glass with a frosted edge		
mounting	standard: surface mount bracket with (+/- 45° from center)   optional: ADBW2-90 full 180° rotation (+/- 90° from center)		
ingress protection	IP66 rated for wet, exterior location (Connectors IP68)		
vibration resistance	compliant with 3G ANSI C136.31		
fixture connections	Twist-lock IP68 rated, CCC		

#### PERFORMANCE

color temperature	2700K	3000K	3500K	4000K	5000K
lumen output (per foot)	865 lm	893 lm	925 lm	950 lm	1000 lm
lifetime	> 70,000 hours / L70 or better				
color consistency	3 SDCM / standard: 87 CRI   optional: 90 CRI				
operating temperature	-40°F to 104°F (-40°C to 40°C)				
junction temperature	69°C @ T <sup>a</sup> 25°C				
warranty	5-Year limited warranty (refer to website for details)				

#### ELECTRICAL

input voltage	Universal 120–277V AC
power supply	integral Class II, electronic high-power factor > 94% @120V
certification	ETL / cETL listed, CEC Title 24 - JA8 Compliant
standards	UL1598/CSA C22.2 No. 250.0; IESLM-79/LM-80; FCC Part 15
power consumption	9W/ft @ 120V
dimming	ELV (reverse phase/trailing edge) ≤ 5%



Due to continuous development and improvements, specifications are subject to change without notice. Solid State Luminaires reserves the right to change lab test details or specifications without notice. Product use certifies agreement to Solid State Luminaires terms and conditions.

# COVELINE WET 1.5

## Ordering Information



### PART NUMBER

CVLWET1.5													
MODEL		LENGTH	CCT		CRI		OPTICS	OPTIONS					
CVLWET1.5	COVELINE WET 1.5	1	12 in. (305 mm)	WHITE LIGHT	MONO COLOR	80CRI	80 CRI	10	10° beam	WCL-1	Louvre (Black) - 1 ft.		
		4	46.8 in. (1189 mm)	27K	2700K	AMB	Amber	90CRI	90 CRI	1040	10° x 40° beam	WCL-4	Louvre (Black) - 4 ft.
		6	70 in. (1778 mm)	3K	3000K	BLU	Blue			120	120° beam	WCL-6	Louvre (Black) - 6 ft.
				35K	3500K	LTBLU	Light Blue			25	25° beam	WCHS-1	Louvre w/House Shield (Black) - 1 ft.
				4K	4000K	RED	Red			3060	30° x 60° beam	WCHS-4	Louvre w/House Shield (Black) - 4 ft.
				5K	5000K					40	40° beam	WCHS-6	Louvre w/House Shield (Black) - 6 ft.
										80	80° beam		
										67140	67° x 140°		
								ASY	21° x 56° asymmetric				

**Accessories** (Indicate the quantity needed for each item.) **REQUIRED:** Starter Cable (SC10W) and Terminator Cap (TCAPW) for every run. **Maximum Run Length** = 60 feet (120V)

_____ <b>SC10W</b>	10 ft. Starter Connection Cord	_____ <b>EC12W</b>	12 in. Extension Cord
_____ <b>TCAPW</b>	Terminator Cap	_____ <b>EC24W</b>	24 in. Extension Cord
		_____ <b>EC60W</b>	60 in. Extension Cord

**Mounting Options (ADBW2 Included With Fixture) (requirements vary for each fixture ordered - see mounting pages for details)**

_____ <b>ADBW2-90</b>	90° Adjustable Bracket (Bi-directional)	_____ <b>CA2-6</b>	Cantilever Arm - 6"	_____ <b>LS-6</b>	Landscape Spike - 6"
		_____ <b>CA2-12</b>	Cantilever Arm - 12"	_____ <b>HLS</b>	Heavy Duty Landscape Spike
		_____ <b>CA2-18</b>	Cantilever Arm - 18"		

### Use Module Only to Convert 0-10V Signal to ELV Dimming

DIM0-10VELV is a dimming module that converts a 0-10V dimming signal to an ELV (electronic low-voltage) reverse phase dimming signal for ELV dimmable lighting products.

**Control Components** (Indicate the quantity needed for each item.) (1 module per run) (Indoor rated)

**REQUIRED:** Starter Cable (SC6) and Terminator Cap (TCAP) for every run.

_____ <b>DIM0-10VELV-UNV-OJBM-IJBM-BLA</b>	0-10V ELV Dim Module, Output Junction Box Mount (12" lead wire), Input Junction Box Mount (12" lead wire), Interior Rated Enclosure, Black Anodized Alum.
_____ <b>DIM0-10VELV-UNV-OCPPM-ICPPM-BLA</b>	0-10V ELV Dim Module, Output Conduit Pipe Mount (96" lead wire), Input Conduit Pipe Mount (96" lead wire), Interior Rated Enclosure, Black Anodized Alum.

Due to continuous development and improvements, specifications are subject to change without notice. Solid State Luminaires reserves the right to change lab test details or specifications without notice. Product use certifies agreement to Solid State Luminaires terms and conditions.

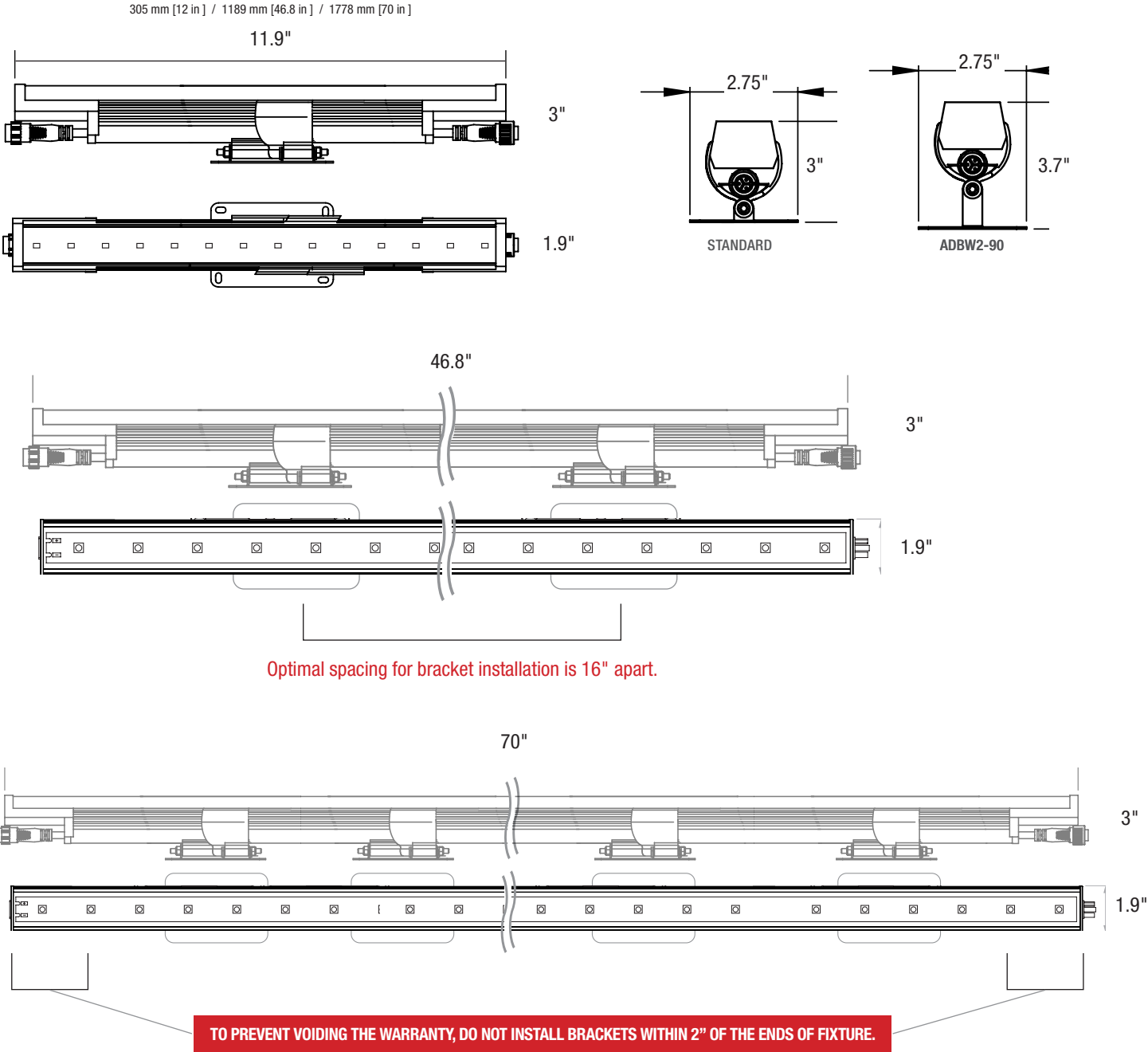
 US Commercial Lighting Manufacturer Since 1982

**Specification Sheet**

# Standard Dimensions



DIMENSIONS WITH STANDARD BRACKET



Due to continuous development and improvements, specifications are subject to change without notice. Solid State Luminares reserves the right to change lab test details or specifications without notice. Product use certifies agreement to Solid State Luminares terms and conditions.

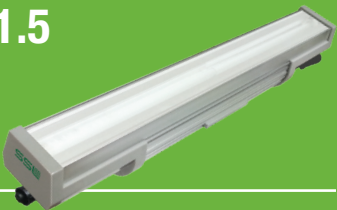


US Commercial Lighting Manufacturer Since 1982

Specification Sheet

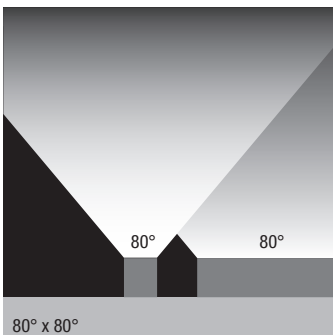
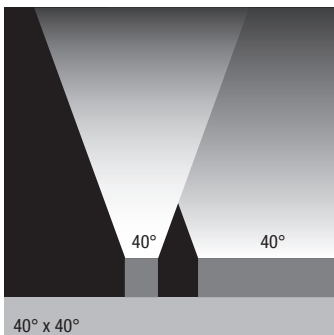
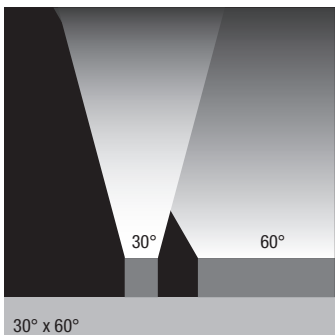
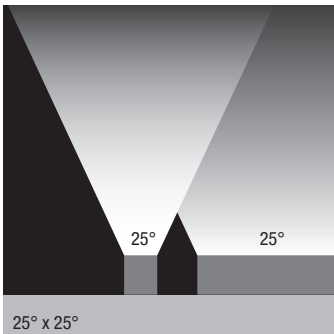
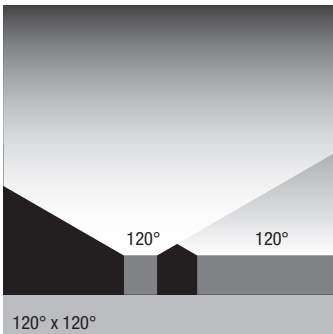
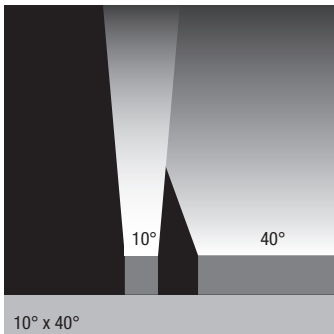
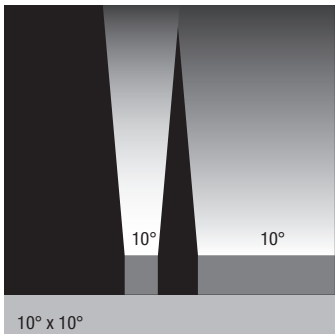
# Photometry

## COVELINE WET 1.5



### CVLWET AVAILABLE OPTICS

FIND IES FILES ON [SOLIDSTATELUMINAIRES.COM](http://SOLIDSTATELUMINAIRES.COM)



### PERFORMANCE

### DIMMING

Model	Connected Wattage	Delivered Lumens				
		2700K	3000K	3500K	4000K	5000K
CVLWET1.5-1	9	865	893	925	950	1000
CVLWET1.5-4	36	3460	3572	3700	3800	4000
CVLWET1.5-6	54	5190	5358	5550	5700	6000

#### TRIAC, REVERSE PHASE DIMMING

Model	Description
DELV	Lutron Diva Dimmer 300P
SELV	Lutron Skylark Dimmer 153P
SCL	Lutron Skylark Dimmer 300P



DELV

SELV

SCL

Dimmers sold by others.

Due to continuous development and improvements, specifications are subject to change without notice. Solid State Luminaires reserves the right to change lab test details or specifications without notice. Product use certifies agreement to Solid State Luminaires terms and conditions.



US Commercial Lighting Manufacturer Since 1982

**Specification Sheet**

## Mounting Options



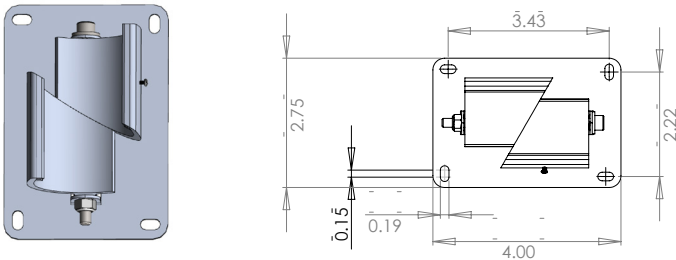
### STANDARD ADJUSTABLE BRACKET REQUIREMENTS

Minimum Bracket Requirement					
CVLWet-1	1	CVLWet-4	2	CVLWet-6	3

### 90° ADJUSTABLE BRACKET REQUIREMENTS

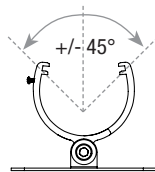
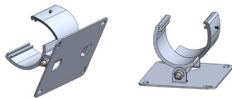
Minimum Bracket Requirement					
CVLWet-1	1	CVLWet-4	2	CVLWet-6	3

### STANDARD ADJUSTABLE BRACKET (ADBW2)

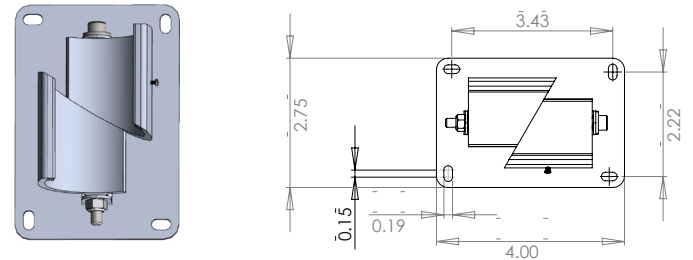


#### Universal Orientation

- Mounts to horizontal or vertical surfaces
- Easy installation w/fixture in position
- +/- 45° to surface

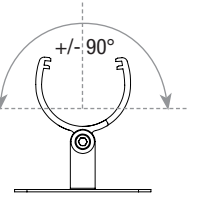
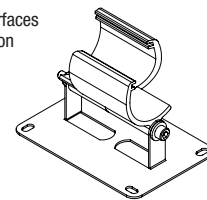


### 90° ADJUSTABLE BRACKET (ADBW2-90)



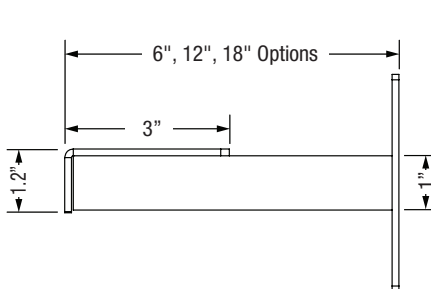
#### Universal Orientation

- Mounts to horizontal or vertical surfaces
- Easy installation w/fixture in position
- +/- 90° to surface

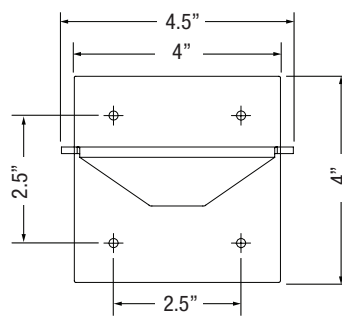


### CANTILEVER ARM (CA2)

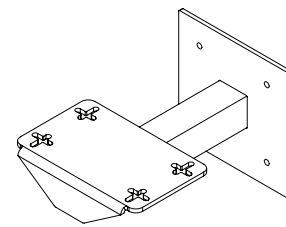
CA2	arm length	Fixture	CA2 Requirement
CA2-6	6"	1-foot	1
CA2-12	12"	4-foot	2
CA2-18	18"		



SIDE VIEW



FRONT VIEW



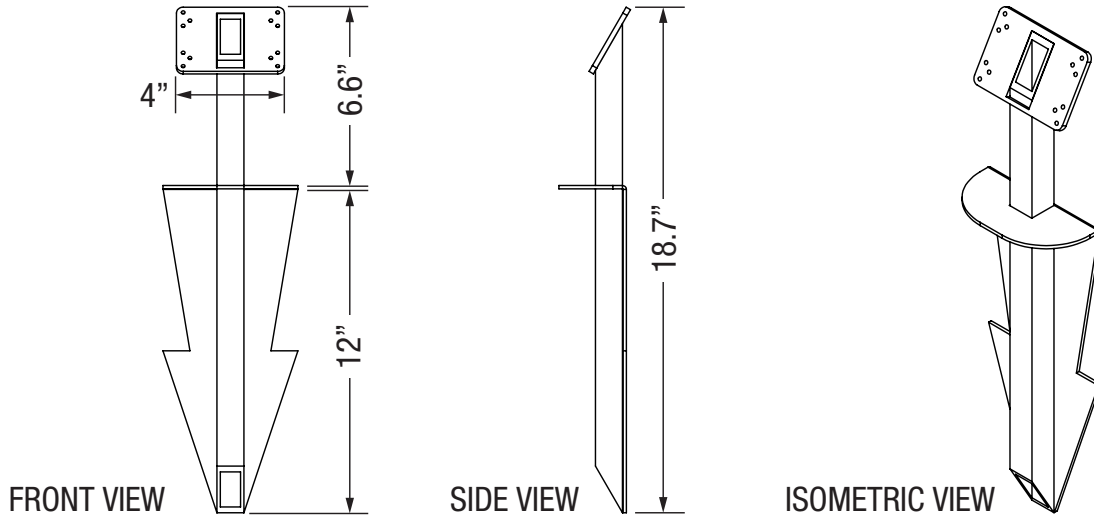
ISOMETRIC VIEW

Due to continuous development and improvements, specifications are subject to change without notice. Solid State Luminares reserves the right to change lab test details or specifications without notice. Product use certifies agreement to Solid State Luminares terms and conditions.

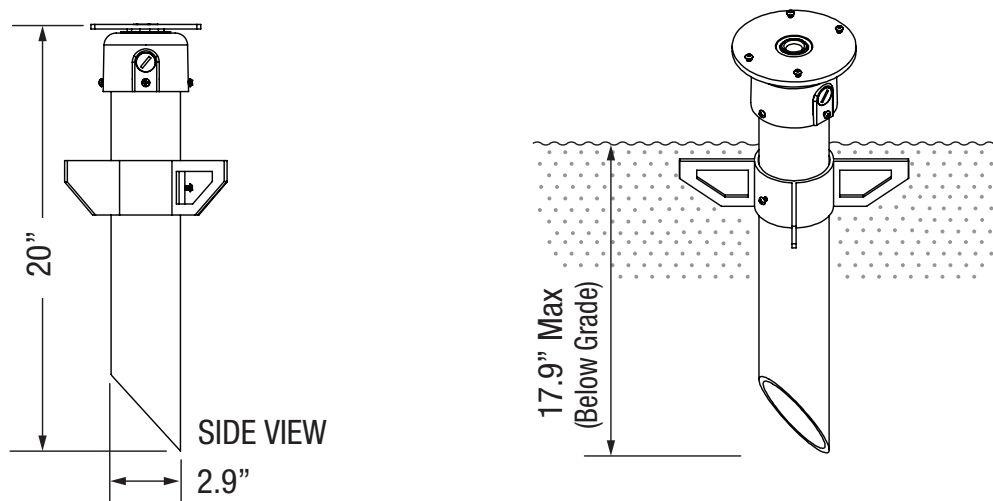
# Mounting Option Accessories



## LANDSCAPE SPIKE - LS-6



## HEAVE DUTY LANDSCAPE SPIKE - HLS

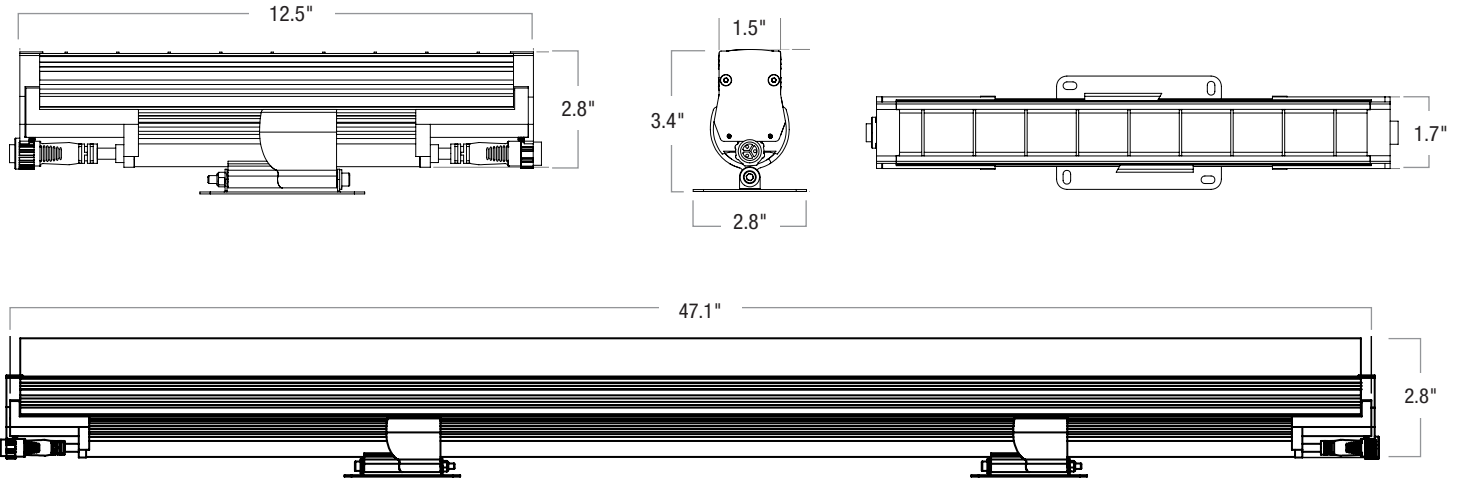


Due to continuous development and improvements, specifications are subject to change without notice. Solid State Luminaires reserves the right to change lab test details or specifications without notice. Product use certifies agreement to Solid State Luminaires terms and conditions.

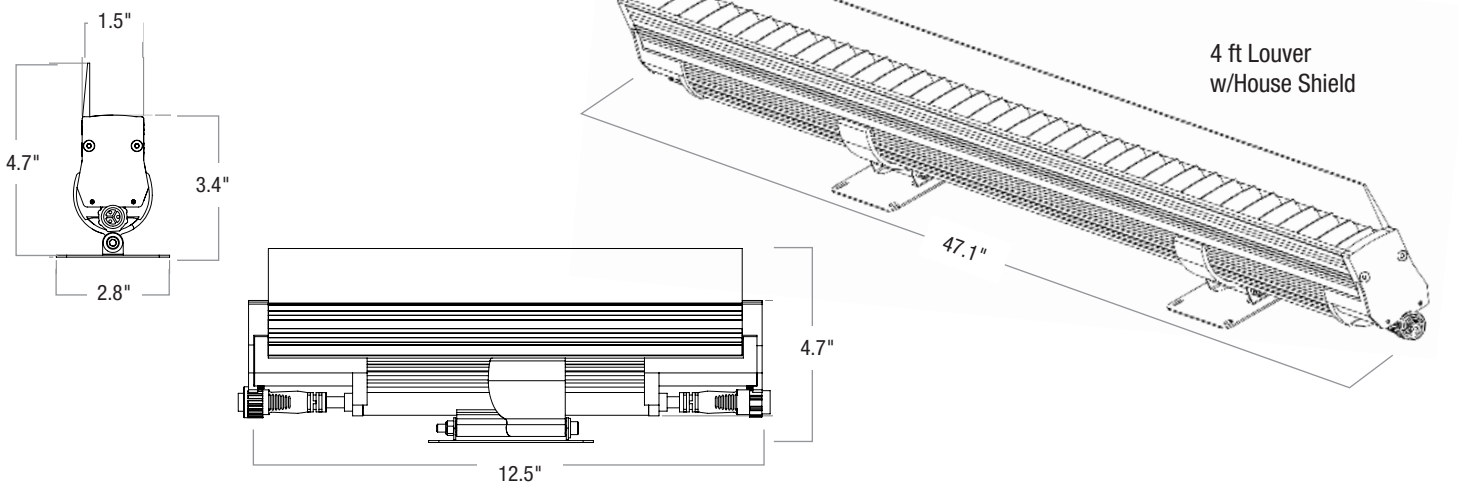
# Accessories



LOUVER - WCL			1FT	4FT	
louver height	.25"		louver length	12.5"	47.1 "
overall height w/bracket	3.4"		louver width	1.5"	1.5"



HOUSE SHIELD - WCHS				1FT	4FT
shield height	1.3"		louver length	12.5"	47.1"
overall height w/bracket	4.7"		louver width	1.5"	1.5"

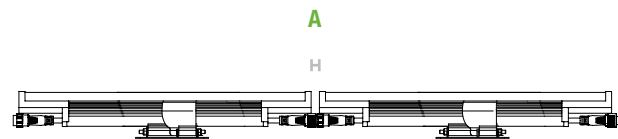


Due to continuous development and improvements, specifications are subject to change without notice. Solid State Luminaires reserves the right to change lab test details or specifications without notice. Product use certifies agreement to Solid State Luminaires terms and conditions.

# Connectivity Options



## CONNECTIONS & CABLES



Daisy Chain Fixtures (1')

- A:** MIN/0" - MAX/.38" between fixtures
- B:** SC10W - 10ft Starter Cord
- C:** EC12W 12 in. Extension Cord
- C:** EC24W 24 in. Extension Cord
- C:** EC60W 60 in. Extension Cord
- D:** TCAPW 1.13" Terminator Cap



Daisy Chain Fixtures (4') & Daisy Chain Fixtures (6')

### B: STARTER CABLES

INSURE FIRST FIXTURE IS ORIENTED TO ACCEPT MALE CONNECTOR STARTER CABLE



### C: EXTENSION CABLES



### D: TERMINATOR CAP TCAP



Due to continuous development and improvements, specifications are subject to change without notice. Solid State Luminaires reserves the right to change lab test details or specifications without notice. Product use certifies agreement to Solid State Luminaires terms and conditions.



US Commercial Lighting Manufacturer Since 1982

© Solid State Luminaires

3609 swenson ave • st. charles il • 60174 | fclighting.com | 800.900.1730

Specification Sheet

AG-JF-013123



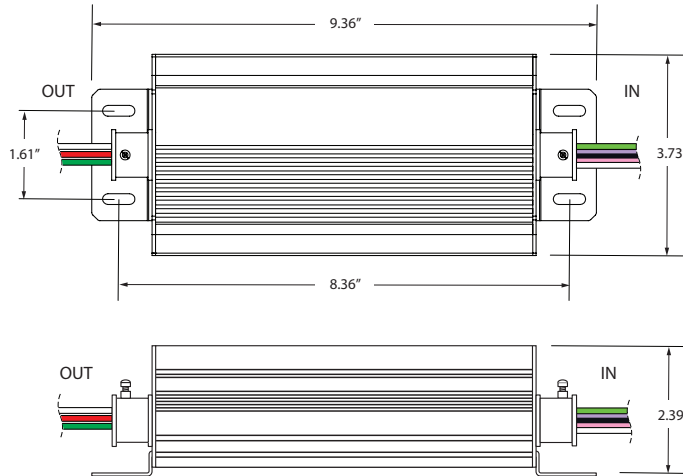
## Control Components



### CONTROL OVERALL DIMENSIONS (DIMO-10VELV) ALL VERSIONS

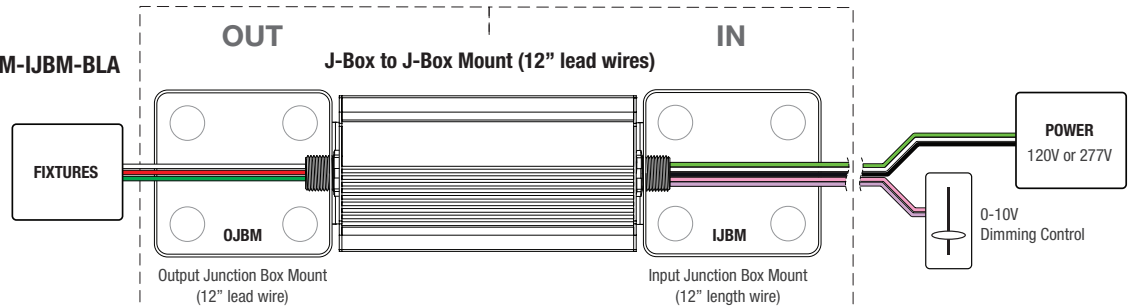
#### Use Module Only to Convert 0-10V Signal to ELV Dimming

Converts 0-10V signal  
for ELV Dimming protocol.

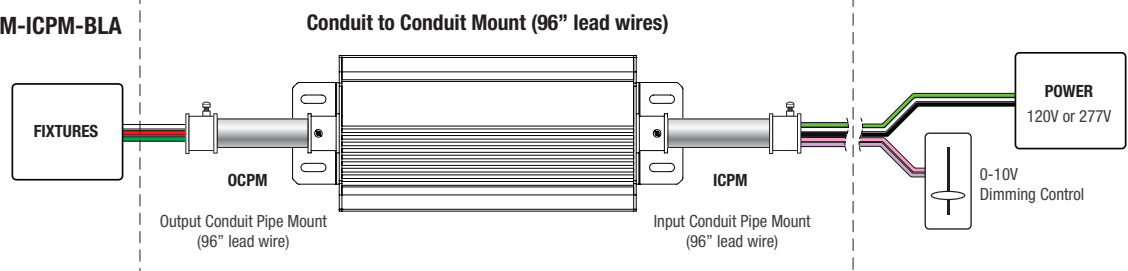


### CONTROL CONNECTIVITY (DIMO-10VELV) EACH VERSION

#### DIMO-10VELV-UNV-OJBM-IJBM-BLA



#### DIMO-10VELV-UNV-OCPM-ICPM-BLA



Due to continuous development and improvements, specifications are subject to change without notice. Solid State Luminares reserves the right to change lab test details or specifications without notice. Product use certifies agreement to Solid State Luminares terms and conditions.