



ColourLine™

RGBW Collection

SSL   
solid state luminaires

US Commercial Lighting Manufacturer

## ColourLine™ RGBW LED Lighting

---

Our ColourLine RGBW LED Lighting products combine efficiency and performance. This catalog is a showcase of those product offerings. ColourLine defines the collection of all SSL RGBW products we offer. The engineers here at SSL are proactive in the adaptation of new LED technology that provides innovative solutions to our strategic partners. We continue to lead with new ideas as a result of our intensive research and development. Our goal is to exceed customer expectations in quality, maintain up-to-date industry standards and offer feature rich products at the best value. We deliver to global partners from our U.S. manufacturing facility. Always refer to our website for the latest product details and specifications.

## About SSL

---

Solid State Luminaires is a US commercial manufacturer of next-generation LED lighting. Our engineers intensive development processes include practicing utilization of the best technology available for commercial lighting needs. The result is your premier LED solution provider.

We believe the performance of LED-based lighting depends heavily on fixture design to minimize performance-robbing thermal build-up and control excessive and wasteful beam spread. Each product we design is evaluated on how it works in it's entirety, to provide a sound solution. Evident by our product line specifications, we provide the highest performing, most efficient LED products on the market.

Our interior and exterior LED solutions offer not only affordability and energy efficiency, but also a high level of flexibility in optical controls and installation.

Our dramatic indoor and outdoor lighting solutions offer opportunities to create complete, fully integrated building and ground treatments.

## Quality that comes with a guarantee | 5-Year Warranty



Solid state lighting offers the technology to be able to manufacture unprecedented efficiencies and long-lasting, cost saving products. Customers and their constituents need to ensure that the products they specify come from a source they can trust and depend on. We realize this requires a guaranteed effort to back up any claims regarding performance and quality. To substantiate of our commitment, we offer a 5-year limited warranty.

For complete warranty information, please consult the factory or visit: [solidstateluminaires.com](http://solidstateluminaires.com)

Due to continuous development and improvements, specifications are subject to change without notice.



# ColourLine™ RGBW FEATURES

## ColourQuick RAPID-MIX COLOR



ColourLine RGBW Fixtures provide the quickest color mixing in the industry. The SSL ColourQuick technology enables our ColourLine Interior Cove and Grazer to mix instantaneously, within one inch.



## ColourClone TRU-COLOR RGBW MATCHING



As part of our manufacturing process, SSL Automated Manufacturing Robots calibrate every fixture to the exact same X,Y color coordinates to provide Step-1 like consistency. This process enables every fixture to be an exact clone. At the end of the process, a bar code is generated for every board. This allows for exact matching for job add-ons or warranty replacements.

## ColourSoft SMOOTH LOW-TRIM DIMMING

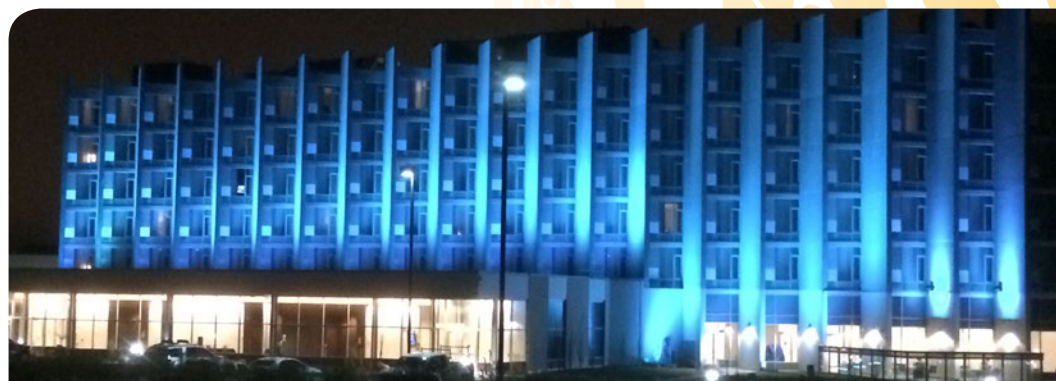


Standard dimming technology uses 8-bit resolution for 256 individual steps. Our 32-bit on-board MCU uses SSL developed software to provide 16-bit resolution that allows 65,536 steps of resolution and only use 8-bits of addressing space! We also use a logarithmic delineation of the resolution to concentrate in the lower third of the dimming curve so the low-end dimming and color transitions have zero flicker.

## ColourMode RGBW & TUNEABLE WHITE IN ONE



SSL uses Digital Dual Mode (DDM) technology to provide RGBW and Tuneable White in one fixture! SSL firmware is designed to use 6 DMX channels in the DDM Personality Mode. Maximum Mood Enhancement is available to use for any type of environment. Channels 1-4 are reserved for RGBW. Channels 5-6 are used for White color tuning. Channel 5 controls intensity, channel 6 controls White color.



# ColourLine™ Wet

RGBW Linear Outdoor LED



## Features

---

- integral universal driver
- RDM control, NVLAP® tested
- 14 Watts /ft, up to 605 lm/ft
- **ColourQuick**  
shortest distance color mixing
- **ColourClone**  
fixture color clone accuracy
- **ColourSoft**  
smooth low trim dimming
- **ColourMode**  
RGBW & White tuning in one fixture



## ColourLine™ Wet

---

The quality of design resides in the efficiency and performance of ColourLine Wet. Functionality is attributed to the sensibilities given to RGBW color control and application needs. Our SSL brand ColourSelect Console allows 64 preset color light patterns for ease of control. Accessories for ColourLine Wet include Black Louvers for visual glare, Louver House Shield for cut-off along the linear side of the fixture, Landscape Spikes for flexible ground treatment and various length Cantilever Arms for surface and wall mounting.



## POWER

15W/ft of input power provides up to 605 lumens per foot at full power. Solid State Luminaires fixtures accept the full range of input power from 120VAC to 277VAC which provides maximum installation flexibility.

## OPTICS

CLWET offers 15 different optical choices to suit any application requirement. 10° x 10° provides a tight, controlled beam for wall grazing up to 30 feet. 10° x 60° allows grazing with beam overlap for a wider spread. 30° x 80° can be used as a grazer or wall wash for installations that need more wash coverage and 120 is an ideal wall wash solution.

## STANDARDS BASED

Solid State Luminaires line of RGBW products fully comply with the most up-to-date industry standards. The in-house developed RDM firmware is continually reviewed to keep up with the latest ESTA RDM and ACN standard released. This provides assurance that SSL RGBW products will inter-operate with all RDM controls, devices and fixtures in the market that comply to the standard.

## PRECISION TESTING

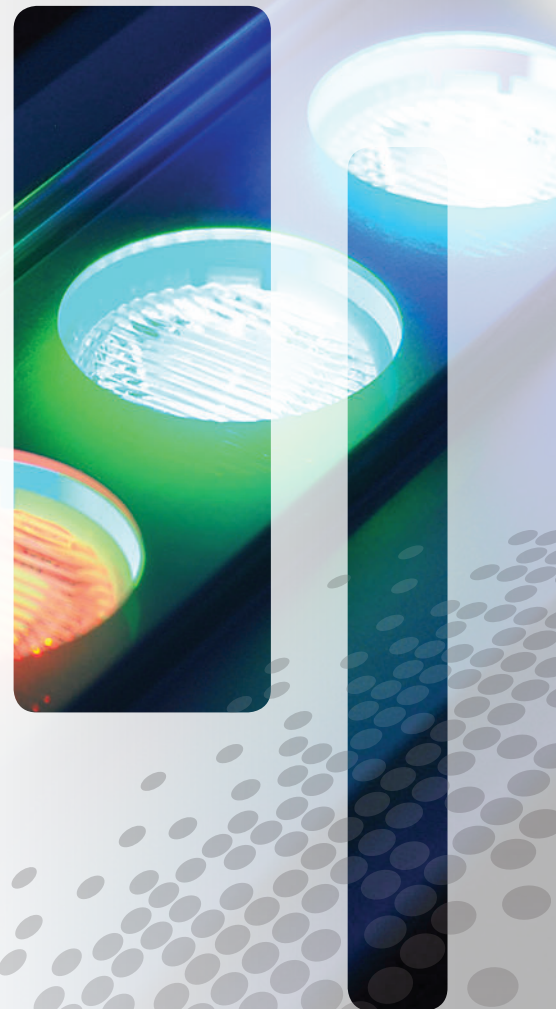
All data provided for SSL products are precision-tested by a NVLAP® accredited test facility.

## CONTRACTOR FRIENDLY

The CLWET uses an easy to install, adjustable mounting bracket to quickly apply fasteners and set the fixture angle. There's an optional higher clearance mounting bracket with 180° rotation.

## RUGGED

The CLWET family conforms to ANSI C136.1 vibration testing making the fixture an ideal solution for use on bridges and other extreme condition applications.



## MOUNTING OPTIONS

ColourLine RGBW is available in 1-foot and 4-foot lengths, scalable from small to large application design.

## Features

- Louvers & Cantilever Arms
- Building and Grounds Solutions
- Adjustable Brackets Standard
- Powder Coated Accessories



4-foot (CLW-4)  
48" - 10.4 lbs



1-foot (CLW-1)  
12.3" - 2.8 lbs

**Louver - (CLWL) House Shield - (CLWHS)**

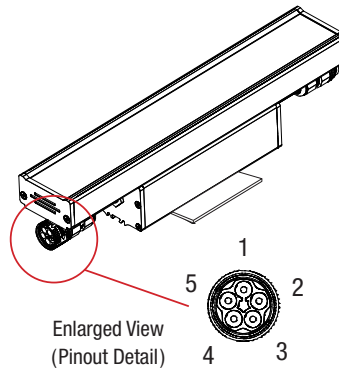
**Landscape Spike -** Lengths: 12" (CLWS1), 48" (CLWS4)

**Cantilever Arm -** Lengths: 6" (CA2/6), 12" (CA2/12), 18" (CA2/18)

**Mounting Brackets -** Standard 80° Adjustable and Full 180° option



Locking  
Connectors



Enlarged View  
(Pinout Detail)

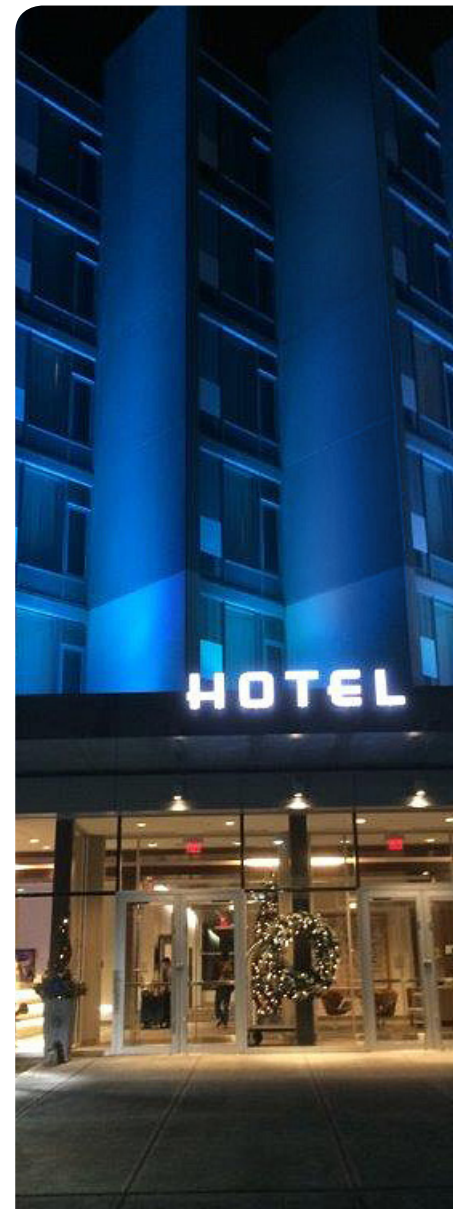
COLOR KEY	
1	Green (≠ Ground)
2	White (- Neutral)
3	Orange (<- Data [-])
4	Red (<+ Data [+])
5	Black (+ Line)

## Cord Lengths

- Starter Cord: 10 ft, 50 ft
- Extension Cord: 12", 24", 60"

**Required Per Run:** Starter Cable (SC10CLW), Terminator Cap (TCAPDCLW)

**Maximum Run Length** = 100 feet @ 120V / 240 feet @ 277V



# ColourLine™ Indoor RGBW

## ColourLine Cove RGBW INDOOR

**COLOURLINE COVE** is an indoor RGBW luminaire that provides high-output illumination for smooth linear color applications. It's small profile, sturdy construction, adjustable base and plug-n-play connectivity make it easy to install in a variety of applications.



Colour Possibilities



## Cove & Graze Common Features

**4.6 billion colors** - color match anything

**65,536 dimming steps** - no low-end trim flickering

**1:1 factory cloning** - calibrated for 1-step color consistency

**6 DMX channels in 1** - 1-4 RGBW and 5-6 Tunable White

**180 adjustable bracket** - easy to install and adjust

## ColourLine Graze **RGBW** INDOOR

**COLOURLINE GRAZE** is an indoor RGBW luminaire that provides high-output illumination for grazing, wall wash and linear spot and flood applications. It's optical selection, sturdy construction, adjustable base and plug-n-play connectivity make it easy to install in a variety of applications.



Broad Colour Washes

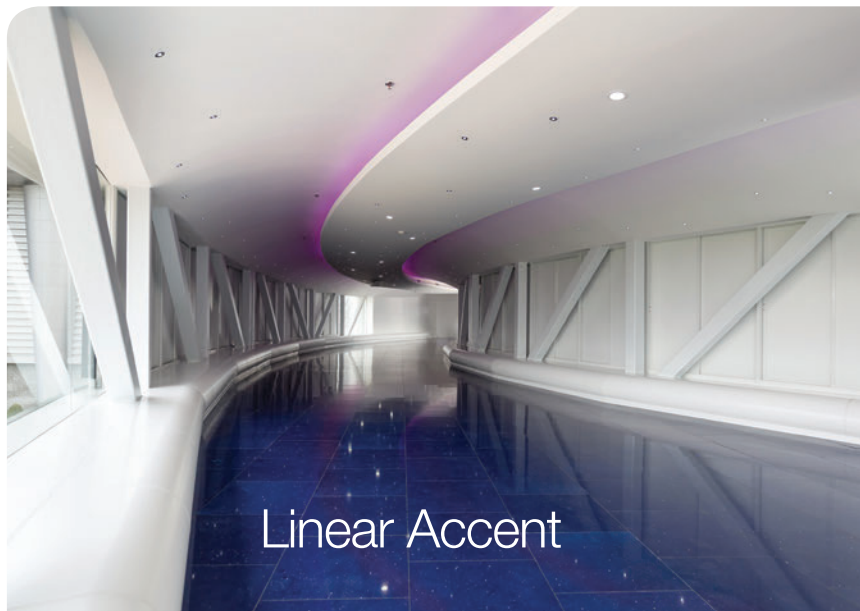
# ColourLine Cove

RGBW  
INDOOR



110° optic beam

- Linear Accents
- Wall Washes



Linear Accent



Circadian Hues

Smooth and even  
colored linear light pattern

# ColourLine Graze

RGBW  
INDOOR

7 optic beams

12° | 15° x 30°

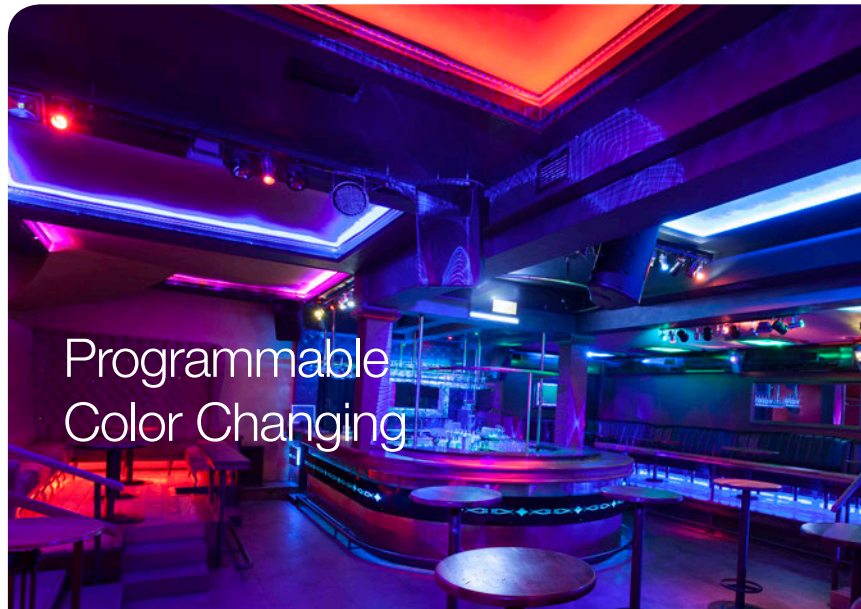
25° x 25° | 20° x 40°

30° x 40° | 40° x 40° | 40° x 15°

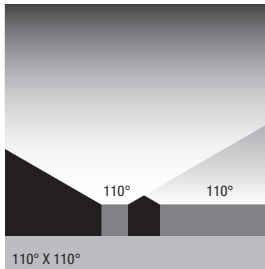
- Wall Graze
- Linear Spot
- Linear Flood



Graze up to 30 feet



# ColourLine Cove **RGBW** INDOOR



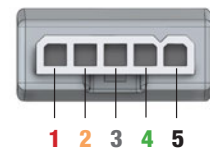
Ambient Changing Color

## Common Features



Both **Cove** & **Grazer** use the same 180° adjustable bracket.

Both **Cove** & **Grazer** use 4-in-1 LEDs.



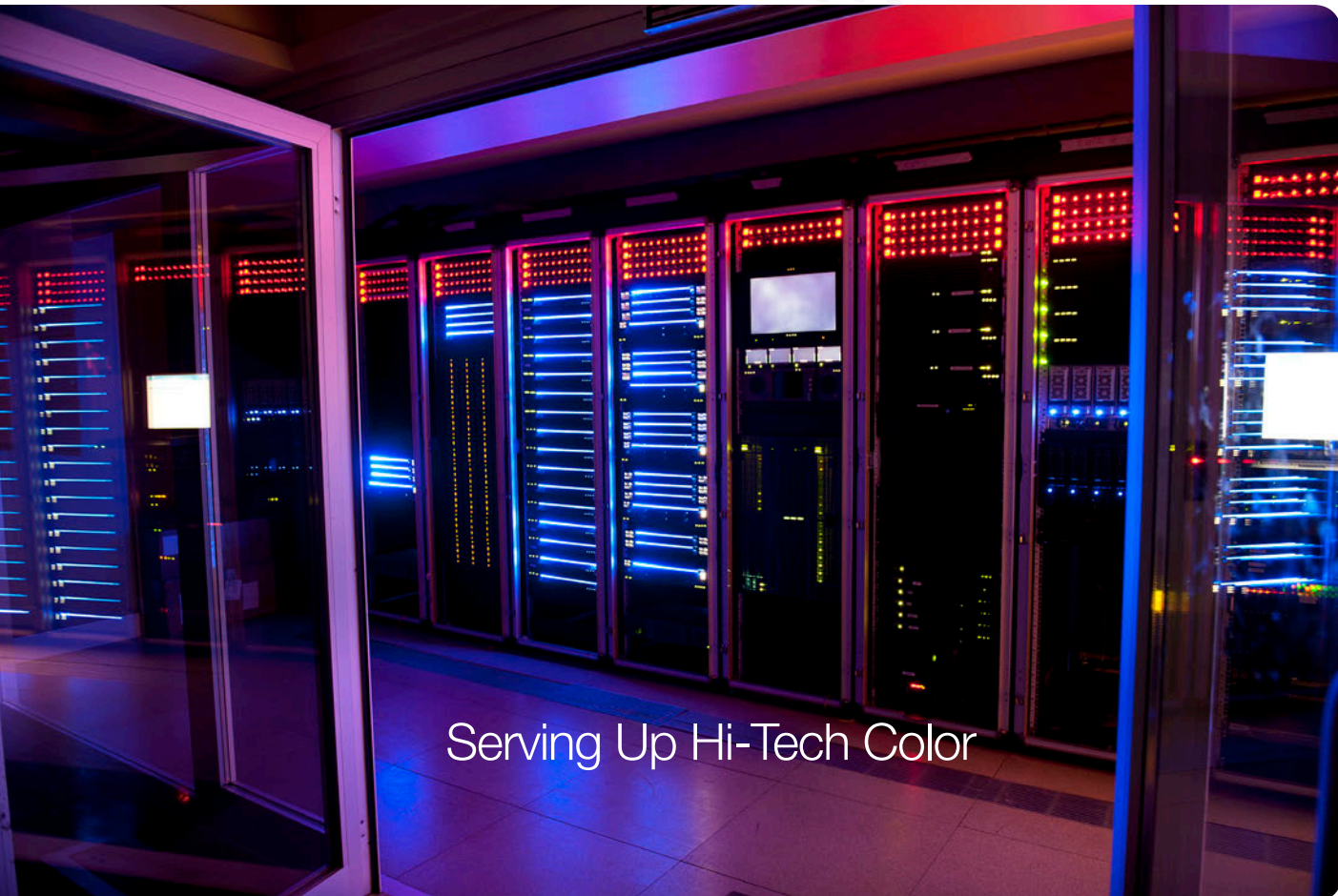
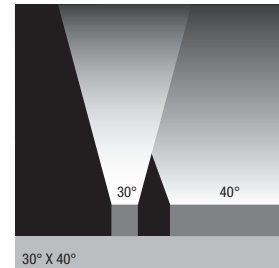
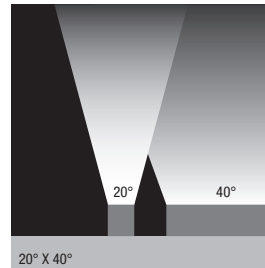
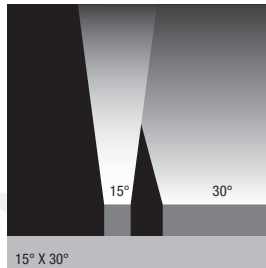
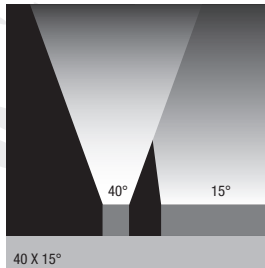
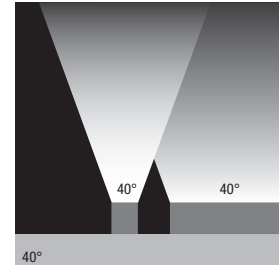
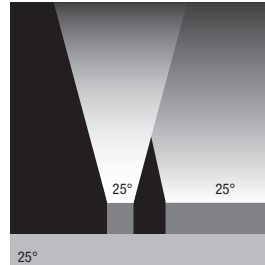
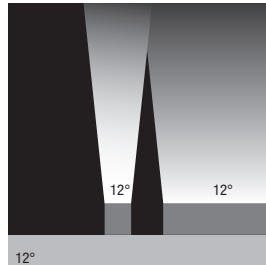
COLOR KEY	
1	Red (<+ Data [+])
2	Orange (<- Data [-])
3	White (– Neutral)
4	Green (⊥ Ground)
5	Black (+ Positive)



Both **Cove** & **Grazer** use the same 5-pin connectors.

# ColourLine Graze

RGBW  
INDOOR



Serving Up Hi-Tech Color

# ColourLine Floods **RGBW** OUTDOOR

## SSF2100 Series Floods

**COLOURLINE FLOODS** are a series of three round, RGBW controllable Flood Lights that provide superior color control and the widest range of mounting options in the industry. They have the ability to control 4.6 billion colors including RGBW and Tuneable White. The integral driver is 120-277V universal voltage allowing installation adaptability. Our wide range of optical accessories and mounting options sets the stage for ideal solutions to every design lighting project.



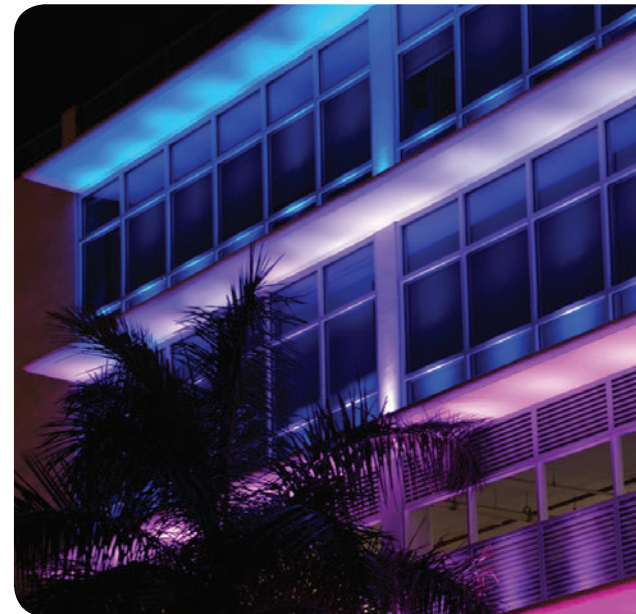
SSF2105

SSF2106

SSF2109

- **Widest range of mounting options.**
- **Many optical accessories to specify.**

Precision, Uniformity and Versatility.



## All These Features In A Single Fixture



### ColourQuick

#### RAPID-MIX COLOR

- Instantaneous Color Mixing – Within 1 inch
- Shortest Distance in Industry for Blending Colors
- 4-in-1 RGBW LED designed to SSL Specifications



### ColourClone

#### TRU-COLOR RGBW MATCHING

- Robotic Calibration of every fixture provides 1-Step consistency
- Every fixture has same X, Y color coordinates
- Perfect match for add-ons and replacements



### ColourSoft

#### SMOOTH LOW-TRIM DIMMING

- Flicker-Free Color Transitions and Dimming
- 16-bit performance (65,536 steps) using *only 8-bit addressing*
- SSL Engineered Custom Software and Firmware



### ColourMode

#### RGBW AND TUNEABLE WHITE IN ONE

- SSL Designed Firmware uses 6 DMX Channels
- RGBW and Tuneable White (2-Step, > 90 CRI) in One Fixture
- 5 Distinct Fixture Personalities for - Maximum Flexibility

## CONTROLLERS

The key to a successful RGBW installation is having the proper level of control. ColourLine RGBW luminaires are compatible with the highest industry standards controllers.

### Features

- Scalable to Large and Small Projects
- Most up-to-date industry standards
- Fixture Selection Control



### ColourSelect Console

- Small to Mid-size Projects
- 64 Available Presets
- 2 Universe Control
- Console is RDM Compatible



### ColourSelect RGBW CONTROL



ColourLine RGBW products fully comply with the most up-to-date industry standards. The in-house developed RDM firmware is continually reviewed to keep up with the latest ESTA RDM and ACN standard released. This provides assurance that SSL RGBW products will inter-operate with all RDM controls, devices and fixtures in the market that comply to the standard.

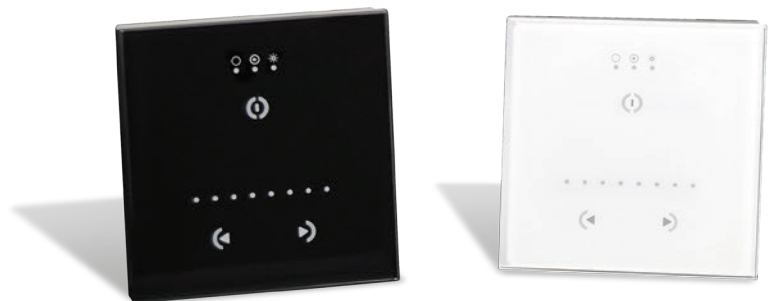
### Pharos Controller

- Scalable to Enterprise Size Projects
- Touch Panel Simplicity
- Capable of RGBW and 0-10V Dimming
- Integration & Design Services available



### Nicolaudie STICK-GU2 Controller

- Modern style in Black or White
- 3 Touch Sensitive Button Controls
- Can Store Up To 24 Scenes
- DMX Stand Alone (128 Channels)





We understand the design and application challenges required to achieve successful RGBW installations. ColourLine RGBW is engineered to meet the most demanding color lighting specifications and also be a simple solution for smaller scale applications. Our team is ready to enhance your experience with next generation technology and support your needs for success.



[solidstateluminaires.com](http://solidstateluminaires.com)

Design • Performance • Sustainability

© FC|SSL • 3609 Swenson Ave., St. Charles, IL 60174 • 800-900-1730

RGBW-BRO 1118